



# Preferred ordering guide for NETCONNECT<sup>®</sup>

APAC Region

COMMScope<sup>®</sup>

# Table of contents

---

NETCONNECT® Installer Partner .....	5
Benefits of being a CommScope NETCONNECT® Installer Partner .....	6
Requirements of a CommScope NETCONNECT® Installer Partner .....	6
Warranties.....	7
Copper Solutions .....	8
<b>Category 6A F/UTP</b> .....	8
NETCONNECT® Category 6A F/UTP Cables .....	8
CommScope SL Discrete Distribution Module (DDM) Patch Panels, Unloaded .....	8
NETCONNECT® Category 6A S/FTP, High-density Solution .....	9
NETCONNECT® SLX Series Information Outlet without Dust Cover .....	9
NETCONNECT® SLX Series Information Outlet with Dust Cover.....	10
NETCONNECT® Eco-friendly Shielded Information Outlets .....	10
NETCONNECT® Angled Faceplates.....	11
NETCONNECT® Category 6A S/FTP Patch Cords.....	11
NETCONNECT® Category 6A S/FTP, High-density Solution.....	11
<b>Category 6A U/UTP</b> .....	12
Category 6A U/UTP Cables.....	12
CommScope Dynamic Angled Distribution Module Panels, Category 6A UTP .....	12
CommScope Distribution Module (DM) Patch Panels, Category 6A UTP.....	13
NETCONNECT® SL Series Information Outlet, without Dust Cover.....	13
CommScope Ceiling Connector Assembly (CCA) Solution .....	13
NETCONNECT® Category 6A U/UTP Patch cords .....	14
NETCONNECT® Category 6A U/UTP, High-density Solution .....	14
<b>Category 6 U/UTP</b> .....	15
NETCONNECT® Category 6 U/UTP Cables.....	15
CommScope Dynamic Angled Distribution Module Panels, Category 6 UTP.....	15
CommScope SL Discrete Distribution Module (DDM) Patch Panels, Unloaded .....	15
NETCONNECT® SL Series Information Outlets .....	16
NETCONNECT® KJ Series Information Outlet, without Dust Cover, to use with Keystone Faceplates of Other Suppliers.....	17
NETCONNECT® Category 6 U/UTP, High Density Solution.....	17
NETCONNECT® Category 6 U/UTP Patch Cords.....	18
<b>Category 6 F/UTP</b> .....	19
NETCONNECT® Category 6 F/UTP Cables.....	19
CommScope SL Discrete Distribution Module (DDM) Patch Panels .....	19
NETCONNECT Category 6 FTP, High-density Solutions .....	19
NETCONNECT SLX Series Information Outlet with Dust Cover .....	20
NETCONNECT SLX Series Information Outlet without Dust Cover .....	20
NETCONNECT Category 6 F/UTP Patch Cords .....	20
<b>Category 5e U/UTP</b> .....	21
NETCONNECT® Category 5e U/UTP Cables.....	21
CommScope SL Discrete Distribution Module (DDM) Patch Panels, Unload .....	21
NETCONNECT® SL Series Information Outlet without Dust Cover.....	21
NETCONNECT® KJ Series Information Outlet without Dust Cover, to use with Keystone Faceplates of Other Suppliers.....	22
Category 5e U/UTP Patch Cords .....	22

# Table of contents

---

<b>Telephone – ADSL Systems</b> .....	23
NETCONNECT® Category 3 Multipair Cables .....	23
NETCONNECT® SL Information Outlet, RJ11 .....	23
LSA-PLUS® Disconnect Module .....	23
LSA-PLUS® Distribution Rack & Backmount Frame (unloaded) .....	24
LSA-PLUS® Wall Boxes (unloaded) .....	24
ComProtect® Overvoltage Protection .....	24
LSA-PLUS® Insertion Tool with Sensor .....	24
<b>Modular RJ45 Plug &amp; Termination Tools</b> .....	25
NETCONNECT® Category 6A RJ45 Modular Plug & Tool .....	25
NETCONNECT® Category 6 RJ45 Modular Plug & Tool .....	25
NETCONNECT® Category 5e RJ45 Modular Plug & Tool .....	26
NETCONNECT® Modular Boot .....	26
NETCONNECT® Modular Plug Color Clip (Used with NPC Patch Cords) .....	26
<b>Faceplate &amp; Accessories</b> .....	27
NETCONNECT® Faceplate US Style .....	27
NETCONNECT® Faceplate UK Style .....	27
NETCONNECT® Single and Dual Outlets 45 x 45 mm (“Mosaic”), used with Legrand Faceplate .....	27
NETCONNECT® Boxes .....	28
NETCONNECT® Consolidation Point .....	29
NETCONNECT® SL Tool .....	29
<b>Horizontal Cable Management</b> .....	30
<b>Outdoor Application</b> .....	31
NETCONNECT® Category 5e .....	31
NETCONNECT® Category 6 .....	31
NETCONNECT® Category 6A F/UTP .....	31
<b>Powered Fiber Solutions</b> .....	32
CommScope Powered Fiber Cable, Outdoor .....	32
CommScope Powered Fiber Cable, Indoor/Outdoor .....	32
CommScope PoE Extender .....	33
CommScope Power Supplies .....	33
<b>Fiber Solutions</b> .....	34
<b>Fiber Optic Cable</b> .....	34
CommScope Indoor, Riser Distribution Cable - APAC .....	34
CommScope Indoor, Low Smoke Zero Halogen Distribution Cable - APAC .....	34
CommScope Indoor/Outdoor Gel LSZH Central Tube Cable - APAC .....	35
CommScope Indoor/Outdoor Gel LSZH Stranded Loose Tube Cable - APAC .....	35
CommScope Indoor/Outdoor Gel LSZH Central Loose Tube Cable, Armored - APAC .....	35
CommScope Indoor/Outdoor Gel LSZH Stranded Loose Cable, Armored - APAC .....	35
CommScope Indoor/Outdoor LSZH Central Loose Cable, Armored - ASEAN Only .....	35
CommScope Indoor/Outdoor LSZH Distribution Cable - APAC .....	35

# Table of contents

---

CommScope Outside Plant Gel Central Tube Cable - APAC .....	36
CommScope Outside Plant Gel Loose Tube Cable - APAC .....	36
CommScope Outside Plant Gel Central Tube Cable, Armored - APAC .....	36
CommScope Outside Plant Gel Loose Tube Cable, Armored - APAC .....	36
CommScope Outside Plant Central Tube Cable - ASEAN Only.....	36
CommScope Outside Plant Central Tube Cable, Armored - ASEAN Only .....	36
<b>Fiber Panel Portfolios.....</b>	<b>37</b>
G2 Panel, Wall Boxes and Accessories .....	37
G2 Modules .....	38
G2 Splice Cassettes .....	39
G2 Adapter Packs .....	40
<b>Standard Density Fiber Solutions .....</b>	<b>41</b>
LGX/1000 Style Panels and Wall Boxes .....	41
LGX/1000 Style Splicing Cassettes .....	41
<b>APAC Local Splicing Solutions .....</b>	<b>42</b>
1U 36F/72F Fiber Splicing Shelf .....	42
1U 12F/24F/48F/96F Fiber Splicing Shelf .....	42
<b>Fiber Connectors and Adapters.....</b>	<b>43</b>
QWIK II Connectors.....	43
APAC Local Adapters .....	43
<b>Method A MPO Trunk and Patch Cords.....</b>	<b>44</b>
<b>LL Fiber Optic Patch Cords.....</b>	<b>45</b>
<b>ULL Fiber Optic Patch Cords .....</b>	<b>45</b>
<b>Fiber Pigtails.....</b>	<b>46</b>
<b>APAC Local Fiber Patch Cords and Pigtails .....</b>	<b>47</b>
<b>Rack and Cabinet .....</b>	<b>48</b>
CommScope Open Rack - ASEAN.....	48
CommScope Wall Mount Rack.....	48
CommScope Rack Accessories.....	49

# NETCONNECT® Installer Partner

NETCONNECT is a complete portfolio of standards-based, technologically superior solutions that support voice, data, security, audio, video, controls and other building and campus systems. The NETCONNECT Structured Cabling Solution provides a complete fiber and copper cable, connectivity and cable management solution from the entrance facility to the desktop and across the campus.

## PartnerPRO® NETWORK

The PartnerPRO® Network  
opportunity:  
new business, more revenue

The PartnerPRO Network is designed to help our partners find new revenue opportunities in today's competitive, global marketplace. A partnership with CommScope gives you a unique opportunity to begin from a position of instant brand recognition and greater trust, especially with new customers. Our partnership enables you to be among the first to offer your customers the latest technologies and innovative solutions from CommScope that can improve network performance, capacity and cost.

CommScope is committed  
to giving our Partners the best  
tools and support to serve our  
mutual customers

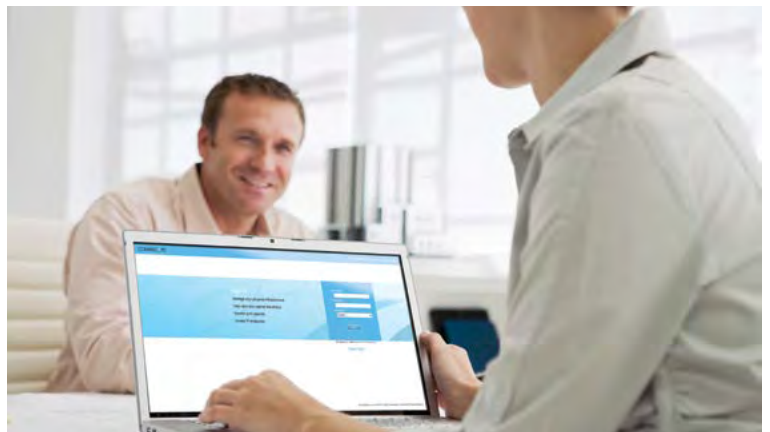
Members are provided access to the CommScope PartnerPRO Portal (CPP): technology created to simplify collaboration, increase knowledge sharing and streamline the warranty process



### Next Steps

As the marketplace continues to become more crowded, differentiating yourself from the competition in a meaningful way becomes more difficult. Becoming a CommScope NETCONNECT Partner allows you to leverage the global equity of the CommScope brand and create greater value for your customers.

To learn more about the CommScope Partner programs available to you, contact your local CommScope representative or visit [www.commscope.com](http://www.commscope.com)



# Benefits of being a CommScope NETCONNECT® Installer Partner

Partners enjoy benefits that can help grow business, expand customer base and maximize profit margins.

- Provide customers maximum warranty protection on CommScope products
- Increased visibility via CommScope's online Partner Locator
- Access to discounted pricing on demonstration, testing and exhibition products
- North America: Access to available co-op marketing funds
- Participation in valuable incentive programs
- Use of the CommScope PartnerPRO Network logo and local sales support
- Access to CommScope design tools, resources and technical support teams
- Inclusion in regional partner conferences, events and Partner communication calls
- Access to regular technical meetings, training and updates from CommScope
- Ongoing education and training on CommScope solutions, including online instruction
- Business events opportunities at CommScope global executive briefing centers
- Eligible to provide extended warranty terms for CommScope authorized projects
- Dedicated Executive Sponsor



## Requirements of a CommScope NETCONNECT® Installer Partner

- Complete and submit an online application via the CommScope PartnerPRO™ Portal (CPP)
- All CommScope products must be purchased through PartnerPRO Network distributors or authorized resellers
- Participate in quarterly business reviews with CommScope to review sales, leads and business development activities
- Complete the CommScope Annual Partnership Process
- Receive a minimum number of customer surveys per year and maintain an average survey score (2 surveys/4.0 average score)

## Training Requirements

- |  |               |
|--|---------------|
| · Installing Premises Cabling Systems, ACT 1: SP3801 or ND3801                     | 2 individuals |
| · Certifying and Troubleshooting Premises Cabling Systems, ACT 2: SP3802 or ND3802 | 2 individuals |
| · Designing Premises Cabling Systems, ACT 3: SP3000 or ND3803 or SP3321            | 1 individual  |

# Warranties

---

CommScope guarantees that all NETCONNECT solutions will deliver on the terms and conditions of our 25- year assurance warranty:

- Will meet—and exceed—published specifications
- Will support all warranted, specified applications
- Will be replaced at no cost, whether a problem arises in the first year or the 25th

It's all covered under the CommScope Network Infrastructure System 25 Year Extended Product Warranty and Application Assurance. Only the best solution on the market can afford to offer this degree of warranty protection.

Full details at [www.commscope.com/Resources/Warranties/](http://www.commscope.com/Resources/Warranties/)

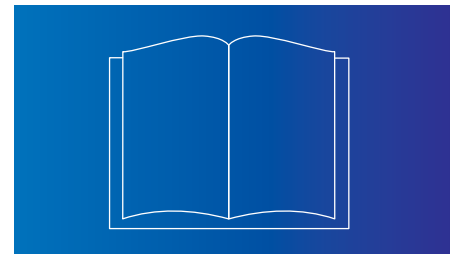
CommScope warrants, for a period of twenty-five (25) years from the Certification Date, that Products in the Registered System shall be free from defects in materials or workmanship subject, to the terms and conditions and limitations of CommScope's Limited Product Warranty in effect at the date of sale.



CommScope Limited Product Warranty



CommScope Network Infrastructure System 25 Year Extended Product and Application Warranty



CommScope Product and Software Warranty Handbook

---

CommScope structured cabling solutions are backed by our industry-leading 25-year Extended Product Warranty and Application Assurance

---

# Copper solutions

## Category 6A F/UTP



### NETCONNECT CATEGORY 6A F/UTP CABLES

PART NUMBER	DESCRIPTION	RATE	COLOR
884024508/10	NETCONNECT CS44Z1, Category 6A Cable, 4 pair, 23 AWG, F/UTP, LSZH, 305M, Reel, White	LSZH	White
884028508/10	NETCONNECT CS44Z1, Category 6A Cable, 4 pair, 23 AWG, F/UTP, LSZH, 305M, Reel, Blue	LSZH	Blue
884020108/10	NETCONNECT CS44CM, Category 6A Cable, 4 pair, 23 AWG, F/UTP, LSZH, 305M, Reel, Blue	CM	White



### COMMSCOPE SL DISCRETE DISTRIBUTION MODULE (DDM) PATCH PANELS, UNLOADED

PART NUMBER	DESCRIPTION	SPACE	PORT	TYPE
760237046	CPP-SDDM-SL-1U-24: CommScope® SL DDM Patch Panel, STP, 1U, 24 port, Straight	1U	24	Straight
760237047	CPP-SDDM-SL-2U-48: CommScope® SL DDM Patch Panel, STP, 2U, 48 port Straight	2U	48	Straight
760237048	CPP-SDDM-SL-1U-24: CommScope® SL DDM Patch Panel, STP, 1U, 24 port, Angled	1U	24	Angled
760237049	CPP-SDDM-SL-2U-48: CommScope® SL DDM Patch Panel, STP, 2U, 48 port Angled	2U	48	Angled
760237050	CPPR-SDDM-SL-1U-24: CommScope® SL DDM Patch Panel, STP, 1U, 24 port, Recessed Angled	1U	24	Recessed Angled
760237051	CPPR-SDDM-SL-2U-48: CommScope® SL DDM Patch Panel, STP, 2U, 48 port, Recessed Angled	2U	48	Recessed Angled



# Copper solutions

## Category 6A F/UTP



NETCONNECT CATEGORY 6A S/FTP, HIGH-DENSITY SOLUTION		
PART NUMBER	DESCRIPTION	SOLUTION TYPE
760237066	<b>CPP-6A-SDDM-SL-1U-48</b> CommScope SL DDM Panel, STP, 1U, 48 port, Straight 1U	Mix Media option
760242924	<b>CPP-1U-E-HD</b> CommScope Patch Panel, Empty, 1U	Mix Media option
760238659	<b>CPP-FMA-KIT-4PK</b> Module Adapter (4 pcs) for Fiber Adapters, Black	Mix Media option
760243427	<b>CPP-FMAE-KIT-4PK BLK</b>	Mix Media option
760242925	<b>CPP-SDDM-SLHD-KIT-4PK</b> CommScope Shielded DDM for HDSL Jacks Black (4 pcs) incl ground kit and 48 jacks SLX Cat6A jack.	Mix Media option



NETCONNECT SLX SERIES INFORMATION OUTLET WITHOUT DUST COVER		
PART NUMBER	DESCRIPTION	COLOR*
2153449-1	NETCONNECT SLX Information Outlet, Category 6A, S/FTP, without Dust Cover, Almond	Almond
2153449-2	NETCONNECT SLX Information Outlet, Category 6A, S/FTP, without Dust Cover, Black	Black
1-2153449-3	NETCONNECT SLX Information Outlet, Category 6A, S/FTP, without Dust Cover, Alpine white	White
2153449-4	NETCONNECT SLX Information Outlet, Category 6A, S/FTP, without Dust Cover, Silver Gray	Silver Gray
2153449-5	NETCONNECT SLX Information Outlet, Category 6A, S/FTP, without Dust Cover, Orange	Orange
2153449-6	NETCONNECT SLX Information Outlet, Category 6A, S/FTP, without Dust Cover, Blue	Blue
2153449-7	NETCONNECT SLX Information Outlet, Category 6A, S/FTP, without Dust Cover, Red	Red
2153449-8	NETCONNECT SLX Information Outlet, Category 6A, S/FTP, without Dust Cover, Yellow	Yellow
2153449-9	NETCONNECT SLX Information Outlet, Category 6A, S/FTP, without Dust Cover, Green	Green

\*Please contact us for other colors or information outlets with dust cover

# Copper solutions

## Category 6A F/UTP



### NETCONNECT SLX SERIES INFORMATION OUTLET WITH DUST COVER

PART NUMBER	DESCRIPTION	COLOR*
2153365-1	NETCONNECT SLX Information Outlet, Category 6A, S/FTP, with Dust Cover, Almond	Almond
2153365-2	NETCONNECT SLX Information Outlet, Category 6A, S/FTP, with Dust Cover, Black	Black
1-2153365-3	NETCONNECT SLX Information Outlet, Category 6A, S/FTP, with Dust Cover, White	White
2153365-4	NETCONNECT SLX Information Outlet, Category 6A, S/FTP, with Dust Cover, Silver Gray	Silver Gray
2153365-5	NETCONNECT SLX Information Outlet, Category 6A, S/FTP, with Dust Cover, Orange	Orange
2153365-6	NETCONNECT SLX Information Outlet, Category 6A, S/FTP, with Dust Cover, Blue	Blue
2153365-7	NETCONNECT SLX Information Outlet, Category 6A, S/FTP, with Dust Cover, Red	Red
2153365-8	NETCONNECT SLX Information Outlet, Category 6A, S/FTP, with Dust Cover, Yellow	Yellow
2153365-9	NETCONNECT SLX Information Outlet, Category 6A, S/FTP, with Dust Cover, Green	Green

\*Please contact us for other colors or information outlets with dust cover



### ECO-FRIENDLY SHIELDED INFORMATION OUTLETS

PART NUMBER	DESCRIPTION	COLOR
4-2153449-2	AMP-TWIST SLX Series Modular Jack, category 6A, shielded , 4 Pair, without dust cover, black (24 ea/pkg)	Black
4-2153449-4	AMP-TWIST SLX Series Modular Jack, category 6A, shielded , 4 Pair, without dust cover, gray (24 ea/pkg)	Gray
5-2153449-3	AMP-TWIST SLX Series Modular Jack, category 6A, shielded , 4 Pair, without dust cover, alpine white (24 ea/pkg)	A. White

### COLOR CAPS

PART NUMBER	DESCRIPTION	COLORS
1-2848025-1	COLOR CAP W/DC,AT-SLX,ALD,50	Almond
1-2848025-2	COLOR CAP W/DC,AT-SLX,BLK,50	Black
1-2848025-3	COLOR CAP W/DC,AT-SLX,WHT,50	White
1-2848025-4	COLOR CAP W/DC,AT-SLX,GRY,50	Gray
1-2848025-5	COLOR CAP W/DC,AT-SLX,ORG,50	Orange
1-2848025-6	COLOR CAP W/DC,AT-SLX,BLU,50	Blue
1-2848025-7	COLOR CAP W/DC,AT-SLX,RED,50	Red
1-2848025-8	COLOR CAP W/DC,AT-SLX,YEL,50	Yellow
1-2848025-9	COLOR CAP W/DC,AT-SLX,GRN,50	Green
2-2848025-0	COLOR CAP W/DC,AT-SLX,VIO,50	Violet

# Copper solutions

## Category 6A F/UTP



### NETCONNECT ANGLED FACEPLATE, RECOMMENDED TO USE WITH SLX INFORMATION OUTLETS

PART NUMBER	DESCRIPTION	PORT	COLOR
760245679	FP KIT, BS, 1 PORT, ANGLED SHUTTERED	1	White
760245680	FP KIT, BS, 2 PORT, ANGLED SHUTTERED	2	White



### NETCONNECT CATEGORY 6A S/FTP PATCH CORDS

PART NUMBER	DESCRIPTION	RATE	COLOR
NPC6ASZDB-WT###M	NETCONNECT Patch cord, Category 6A, 4pair, Stranded S/FTP, LSZH, White, X m	LSZH	White
NPC6ASZDB-GY###M	NETCONNECT Patch cord, Category 6A, 4pair, Stranded S/FTP, LSZH, Grey, X m	LSZH	Grey
NPC6ASZDB-BL###M	NETCONNECT Patch cord, Category 6A, 4pair, Stranded S/FTP, LSZH, Blue, X m	LSZH	Blue
NPC6ASZDB-YL###M	NETCONNECT Patch cord, Category 6A, 4pair, Stranded S/FTP, LSZH, Yellow, X m	LSZH	Yellow
NPC6ASZDB-RD###M	NETCONNECT Patch cord, Category 6A, 4pair, Stranded S/FTP, LSZH, Red, X m	LSZH	Red
NPC6ASZDB-GN###M	NETCONNECT Patch cord, Category 6A, 4pair, Stranded S/FTP, LSZH, Green, X m	LSZH	Green
NPC6ASZDB-BK###M	NETCONNECT Patch cord, Category 6A, 4pair, Stranded S/FTP, LSZH, Black, X m	LSZH	Black
NCC44FZDB-WT###M	NETCONNECT Patch cord, Category 6A, 4pair, Solid F/UTP, LSZH, White, X m	LSZH	White

NOTE: Replace ### with length in met. Eg: 001 = 1m, 002 = 2m, 003 = 3m, 005= 5m.  
Stranded Cord supports length up to 30 meters. Solid Cord support length up to 100 meters



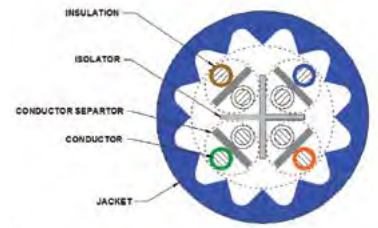
### NETCONNECT CATEGORY 6A S/FTP, HIGH-DENSITY SOLUTION

PART NUMBER	DESCRIPTION	RATE/TYPE	COLOR
760237066	CPP-6A-SDDM-SL-1U-48: CommScope SL DDM Panel, STP, 1U, 48 port, Straight	1U, Straight	Black
760242924	CPP-1U-E-HD CommScope Patch Panel, Empty, 1U	1U, Straight	Black
760238659	CPP-FMA-KIT-4PK Module Adapter (4 pcs) for Fiber Adapters, Black		Black
760242925	CPP-SDDM-SLHD-KIT-4PK CommScope Shielded DDM for HDSL information outlets Black (4 pcs) incl ground kit and 48 information outlets SLX Category 6A information outlet		Black
1859916-X	NETCONNECT Patch cord, Category 6A, 4pair, 30AWG, S/FTP, LSZH, White, X m	LSZH	White
1859918-X	NETCONNECT Patch cord, Category 6A, 4pair, 30AWG, S/FTP, LSZH, Grey, X m	LSZH	Grey
1859919-X	NETCONNECT Patch cord, Category 6A, 4pair, 30AWG, S/FTP, LSZH, Red, X m	LSZH	Red

NOTE: Replace X with length in met. Eg: 1 = 1m, 2 = 2m, 3 = 3m, 5= 5m

# Copper solutions

## Category 6A U/UTP



### CATEGORY 6A U/UTP CABLES

PART NUMBER	DESCRIPTION	RATE	AW	COLOR	LENGTH	PACKAGING
884031004/10	CS44R, Category 6A, 4 Pair, UTP	CMR	23 AWG	Blue	305 m/ 1000 ft	Reel
884019304/10	CS44R, Category 6A, 4 Pair, UTP	CMR	23 AWG	Gray	305 m/ 1000 ft	Reel
884028704/10	CS44Z3, Category 6A, 4 Pair, UTP	LSZH	23 AWG	Blue	305 m/ 1000 ft	Reel
884026504/10	CS44Z3, Category 6A, 4 Pair, UTP	LSZH	23 AWG	Gray	305 m/ 1000 ft	Reel
884036104/10	CS44Z3, Category 6A, 4 Pair, UTP	LSZH	23 AWG	White	305 m/ 1000 ft	Reel
AZ884028704/10	CS44Z3, Category 6A, 4 Pair, UTP (AU-RCM)	LSZH 23	23 AWG	Blue	305 m/ 1000 ft	Reel
AZ884026504/10	CS44Z3, Category 6A, 4 Pair, UTP (AU-RCM)	LSZH	23 AWG	Gray	305 m/ 1000 ft	Reel
460158784	Cat 6A F/UTP Cable, 23AWG. OD 7.9mm.	OUTDOOR	23 AWG	Black	305 m/ 1000 ft	Reel
884048304/10	CS41CM BLU C6A 4/24 U/UTP RL 305M	CM	24 AWG	Blue	305 m	Reel
884048904/10	CS41CM GRY C6A 4/24 U/UTP RL 305M	CM	24 AWG	Gray	305 m	Reel
884037504/10	CS41CM WHT C6A 4/24 U/UTP RL 305M	CM	24 AWG	White	305 m	Reel
884049104/10	CS41R BLU C6A 4/24 U/UTP RL 305M	CMR	24 AWG	Blue	305 m	Reel
884039004/10	CS41R GRY C6A 4/24 U/UTP RL 305M	CMR	24 AWG	Gray	305 m	Reel
884015004/10	CS41R WHT C6A 4/24 U/UTP RL 305M	CMR	24 AWG	White	305 m	Reel
884041004/10	CS41Z1 BLU C6A 4/24 U/UTP RL 305M	LSZH- IEC332-1	24 AWG	Blue	305 m	Reel
884045804/10	CS41Z1 GRY C6A 4/24 U/UTP RL 305M	LSZH- IEC332-1	24 AWG	Gray	305 m	Reel
884049604/10	CS41Z1 WHT C6A 4/24 U/UTP RL 305M	LSZH-IEC332-1	24 AWG	White	305 m	Reel
884047004/10	CS41Z3 BLU C6A 4/24 U/UTP RL 305M	LSZH-IEC332-3	24 AWG	Blue	305 m	Reel
884018004/10	CS41Z3 GRY C6A 4/24 U/UTP RL 305M	LSZH-IEC332-3	24 AWG	Gray	305 m	Reel
884042604/10	CS41Z3 WHT C6A 4/24 U/UTP RL 305M	LSZH-IEC332-3	24 AWG	White	305 m	Reel



### COMMSCOPE DYNAMIC ANGLED DISTRIBUTION MODULE PANELS, CATEGORY 6A UTP

PART NUMBER	DESCRIPTION	SPACE	PORTS	TYPE
760237020	NPPD-6A-DM-1U-24: CommScope Dynamic Angled Distribution Module Panel, Cat6A, UTP, 1U, 24 port	1U	24	Dynamic Angle
760237021	NPPD-6A-DM-2U-48: CommScope Dynamic Angled Distribution Module Panel, Cat6A, UTP, 2U, 48 port	2U	48	Dynamic Angle
760244168	CPPD-6A-DM-1U-24 CommScope Dynamic Angled Distribution Module Panel, Cat6A, UTP, 1U, 24 port	1U	24	Dynamic Angle

# Copper solutions

## Category 6A U/UTP



### COMMSCOPE DISTRIBUTION MODULE (DM) PATCH PANELS, CATEGORY 6A UTP

PART NUMBER	DESCRIPTION	SPACE	PORTS	TYPE
760237032	NPP-6A-DM-1U-24: CommScope SL DM Patch Panel, Cat6A, UTP, 1U, 24 port, Straight	1U	24	Straight
760237033	NPP-6A-DM-2U-48: CommScope SL DM Patch Panel, Cat6A, UTP, 2U, 48 port, Straight	2U	48	Straight
760237036	NPPR-6A-DM-1U-24: CommScope SL DM Patch Panel, Cat6A, UTP, 1U, 24 port, Recessed Angled	1U	24	Angled
760237037	NPPR-6A-DM-1U-48: CommScope SL DM Patch Panel, Cat6A, UTP, 2U, 48 port, Recessed Angled	2U	48	Angled



### NETCONNECT SL SERIES INFORMATION OUTLET, WITHOUT DUST COVER

PART NUMBER	DESCRIPTION	COLOR
760241184	SL10G, L.ALD	Almond
760241185	SL10G, BLK	Black
760241194	SL10G-A.WHT	White
760241190	SL10G-YELLOW	Yellow
760241191	SL10G-GREEN	Green
760241192	SL10G-VIOLET	Violet
760241193	SL10G-E.IVORY	Electric Ivory
760241186	SL10G-Gray	Gray
760241187	SL10G-ORANGE	Orange
760241189	SL10G-RED	Red

\*Please contact us for other colors or information outlets with dust cover



### COMMSCOPE CEILING CONNECTOR ASSEMBLY SOLUTION

PART NUMBER	DESCRIPTION	COLOR
760234921	CommScope Ceiling Connector Assembly (CCA) without cordage	White
760235590	CommScope Category 6A U/UTP Cord, LSZH, RJ45 to Ceiling connector, 1.5 ft., white	White
760235591	CommScope Category 6A U/UTP Cord, Plenum, RJ45 to Ceiling Connector, 1.5 ft., Black	Black
760235585	CommScope Category 6 U/UTP Cord, LSZH, RJ45 to Ceiling Connector, 1.5 ft., Black	Black
760235587	CommScope Category 6 U/UTP Cord, Plenum, RJ45 to Ceiling Connector, 1.5 ft., Black	Black
760235589	CommScope Category 6A U/UTP Cord, LSZH, RJ45 to Ceiling Connector, 1.5 ft., Black	Black

# Copper solutions

## Category 6A U/UTP



### NETCONNECT CATEGORY 6A U/UTP PATCH CORDS

PART NUMBER	DESCRIPTION	RATE	COLOR
NPC6AUVDB-BL###F	NETCONNECT Patch cord, Category 6A, 4pair, Solid U/UTP, CM, Blue, X ft.	CM	Blue
NPC6AUVDB-YL###F	NETCONNECT Patch cord, Category 6A, 4pair, Solid U/UTP, CM, Yellow, X ft.	CM	Yellow
NPC6AUVDB-RD###F	NETCONNECT Patch cord, Category 6A, 4pair, Solid U/UTP, CM, Red, X ft.	CM	Red
NPC6AUVDB-BK###F	NETCONNECT Patch cord, Category 6A, 4pair, Solid U/UTP, CM, Black, X ft.	CM	Black
NPC6AUVDB-GN###F	NETCONNECT Patch cord, Category 6A, 4pair, Solid U/UTP, CM, Green, X ft.	CM	Green
NPC6AUVDB-GY###F	NETCONNECT Patch cord, Category 6A, 4pair, Solid U/UTP, CM, Gray, X ft.	CM	Gray
NPC6AUVDB-OR###F	NETCONNECT Patch cord, Category 6A, 4pair, Solid U/UTP, CM, Orange, X ft.	CM	Orange
NPC6AUVDB-WT###F	NETCONNECT Patch cord, Category 6A, 4pair, Solid U/UTP, CM, White, X ft.	CM	White
NCC44URDB-WT###F	NETCONNECT Patch cord, Category 6A, 4pair, Solid U/UTP, CMR, White, X ft.	CMR	White

NOTE: Replace ### with length in feet. Eg: 004 = 4F, 007 = 7F, 010 = 10F.  
Stranded Cord supports length up to 30 meters. Solid Cord support length up to 100 meters

PART NUMBER	DESCRIPTION	RATE	COLOR
NPC6AUZDB-WT###M	NETCONNECT Patch cord, Category 6A, 4pair, Solid U/UTP, LSZH, White, X m	LSZH	White
NPC6AUZDB-GY###M	NETCONNECT Patch cord, Category 6A, 4pair, Solid U/UTP, LSZH, Gray, X m	LSZH	Gray
NPC6AUZDB-OR###M	NETCONNECT Patch cord, Category 6A, 4pair, Solid U/UTP, LSZH, Orange, X m	LSZH	Orange
NPC6AUZDB-BK###M	NETCONNECT Patch cord, Category 6A, 4pair, Solid U/UTP, LSZH, Black, X m	LSZH	Black
NPC6AUZDB-BL###M	NETCONNECT Patch cord, Category 6A, 4pair, Solid U/UTP, LSZH, Blue, X m	LSZH	Blue
NPC6AUZDB-GN###M	NETCONNECT Patch cord, Category 6A, 4pair, Solid U/UTP, LSZH, Green, X m	LSZH	Green
NPC6AUZDB-YL###M	NETCONNECT Patch cord, Category 6A, 4pair, Solid U/UTP, LSZH, Yellow, X m	LSZH	Yellow
NPC6AUZDB-RD###M	NETCONNECT Patch cord, Category 6A, 4pair, Solid U/UTP, LSZH, Red, X m	LSZH	Red
NCC44UZDB-WT###M	NETCONNECT Patch cord, Category 6A, 4pair, Solid U/UTP, LSZH, White, X m	LSZH	White

NOTE: Replace ### with length in met. Eg: 001 = 1m, 002 = 2m, 003 = 3m, 005= 5m.  
Stranded Cord supports length up to 30 meters. Solid Cord support length up to 100 meters



### NETCONNECT CATEGORY 6A U/UTP, HIGH-DENSITY SOLUTION

PART NUMBER	DESCRIPTION	RATE	COLOR
CO199K2-02M###	CommScope Patch cord, Category 6A, 4pair, 28AWG, Stranded U/UTP, CM, Blue, X m	CM-LS	Blue
CO199K2-08M###	CommScope Patch cord, Category 6A, 4pair, 28AWG, Stranded U/UTP, CM, White, X m	CM-LS	Yellow
CO199K2-07M###	CommScope Patch cord, Category 6A, 4pair, 28AWG, Stranded U/UTP, CM, Red, X m	CM-LS	Red
CO199K2-03M###	CommScope Patch cord, Category 6A, 4pair, 28AWG, Stranded U/UTP, CM, Dark Gray, X m	CM-LS	Dark Gray
CO199K2-04M###	CommScope Patch cord, Category 6A, 4pair, 28AWG, Stranded U/UTP, CM, Spring Green, X m	CM-LS	Spring Green
CO199K2-01M###	CommScope Patch cord, Category 6A, 4pair, 28AWG, Stranded U/UTP, CM, Black, X m	CM-LS	Black
CO199K2-06M###	CommScope Patch cord, Category 6A, 4pair, 28AWG, Stranded U/UTP, CM, Orange, X m	CM-LS	Orange
CO199K2-02M###	CommScope Patch cord, Category 6A, 4pair, 28AWG, Stranded U/UTP, CM, Light Blue, X m	CM-LS	Light Blue
CO199K2-0LM###	CommScope Patch cord, Category 6A, 4pair, 28AWG, Stranded U/UTP, CM, Violet, X m	CM-LS	Violet
CO199K2-09M###	CommScope Patch cord, Category 6A, 4pair, 28AWG, Stranded U/UTP, CM, Yellow, X m	CM-LS	Yellow

NOTE: Replace ### with length in met. Eg: 001 = 1m, 002 = 2m, 003 = 3m, 005= 5m

# Copper solutions

## Category 6 U/UTP



NETCONNECT CATEGORY 6 U/UTP CABLES				
PART NUMBER	DESCRIPTION	JACKET	CONDUCTOR GAUGE	REGION
1427071-6	CS30CM WHT C6 4/24 U/UTP RIB 305M	CM	24 AWG	APAC
1427070-2	CS30Z1 WHT C6 4/24 U/UTP RIB 305M	LSZH	24 AWG	APAC
1967075-2	NETCONNECT Category 6 Cable, 4 pair, 24 AWG, U/UTP, PVC, 305m, Reel in box, Gray	PVC	24 AWG	India
884016914/10	CS31CM BLU C6 4/23 U/UTP CPK 305M	CM	23 AWG	APAC
884031114/10	CS31R GRY C6 4/23 U/UTP CPK 1KFT	CMR	23 AWG	APAC
884022314/10	CS31R BLUE C6 4/23 U/UTP CPK 1KFT	CMR	23 AWG	APAC
884036414/10	CS31Z1 WHT C6 4/23 U/UTP CPK 305M	LSZH	23 AWG	APAC
884036214/10	CS37Z3 ORG C6 4/23 U/UTP CPK 305M	LSZH	23 AWG	India
884036314/10	CS37Z3 GRY C6 4/23 U/UTP CPK 305M	LSZH	23 AWG	India
884036614/10	CS37Z3 GRN C6 4/23 U/UTP CPK 305M	LSZH	23 AWG	India
884036914/10	CS37Z3 WHT C6 4/23 U/UTP CPK 305M	LSZH	23 AWG	India
884037014/10	CS37Z3 YEL C6 4/23 U/UTP CPK 305M	LSZH	23 AWG	India
884037114/10	CS37Z3 RED C6 4/23 U/UTP CPK 305M	LSZH	23 AWG	India
884037414/10	CS37Z3 BLU C6 4/23 U/UTP CPK 305M	LSZH	23 AWG	India



COMMSCOPE DYNAMIC ANGLED DISTRIBUTION MODULE PANELS, CATEGORY 6 UTP			
PART NUMBER	DESCRIPTION	SPACE	PORT
760244166	CPPD-6-DM-1U-24 CommScope Dynamic Angled Distribution Module Panel, Category 6, UTP, 1U, 24 port	1U	24
760237018	NPPD-6-DM-1U-24: CommScope Dynamic Angled Distribution Module Panel, Category 6, UTP, 1U, 24 port	1U	24
760237019	NPPD-6-DM-2U-48: CommScope Dynamic Angled Distribution Module Panel, Category 6, UTP, 2U, 48 port	2U	48



COMMSCOPE SL DISCRETE DISTRIBUTION MODULE (DDM) PATCH PANELS, UNLOADED			
PART NUMBER	DESCRIPTION	SPACE	PORT
760237040	CPP-UDDM-SL-1U-24: CommScope SL DDM Patch Panel, UTP, 1U, 24 port, Straight	1U	24
760237041	CPP-UDDM-SL-2U-48: CommScope SL DDM Patch Panel, UTP, 2U, 48 port Straight	2U	48
760237042	CPPA-UDDM-SL-1U-24: CommScope SL DDM Patch Panel, UTP, 1U, 24 port, Angled	1U	24
760237043	CPPA-UDDM-SL-2U-48: CommScope SL DDM Patch Panel, UTP, 2U, 48 port Angled	2U	48
760237044	CPPR-UDDM-SL-1U-24: CommScope SL DDM Patch Panel, UTP, 1U, 24 port, Recessed Angled	1U	24
760237045	CPPR-UDDM-SL-2U-48: CommScope SL DDM Patch Panel, UTP, 2U, 48 port, Recessed Angled	2U	48

NOTE: Customer should order 9-1375055-2 (in bulk pack, PPQ= 24pcs) to have a fully loaded patch panel.

COMMSCOPE SL DISCRETE DISTRIBUTION MODULE (DDM) PATCH PANEL, LOADED			
PART NUMBER	DESCRIPTION	SPACE	PORT
760242562	CPP-6-UDDM-SL-1U-24: CommScope SL DDM Patch Panel, UTP, 1U, 24 port, Straight	1U	24

# Copper solutions

## Category 6 U/UTP



### NETCONNECT SL SERIES INFORMATION OUTLET, WITHOUT DUST COVER

PART NUMBER	DESCRIPTION	COLOR
1375055-1	NETCONNECT SL Information Outlet, Category 6, UTP, without Dust Cover, Almond	Almond
1375055-2	NETCONNECT SL Information Outlet, Category 6, UTP, without Dust Cover, Black	Black
9-1375055-2	NETCONNECT SL Information Outlet, Category 6, UTP, without Dust Cover, Black, in bulk pack	Black
1-1375055-3	NETCONNECT SL Information Outlet, Category 6, UTP, without Dust Cover, Alpine white	White
1375055-4	NETCONNECT SL Information Outlet, Category 6, UTP, without Dust Cover, Gray	Gray
1375055-5	NETCONNECT SL Information Outlet, Category 6, UTP, without Dust Cover, Orange	Orange
1375055-6	NETCONNECT SL Information Outlet, Category 6, UTP, without Dust Cover, Blue	Blue
1375055-7	NETCONNECT SL Information Outlet, Category 6, UTP, without Dust Cover, Red	Red
1375055-8	NETCONNECT SL Information Outlet, Category 6, UTP, without Dust Cover, Yellow	Yellow
1375055-9	NETCONNECT SL Information Outlet, Category 6, UTP, without Dust Cover, Green	Green



### NETCONNECT SL SERIES INFORMATION OUTLET, WITH DUST COVER

PART NUMBER	DESCRIPTION	COLOR
1375187-1	NETCONNECT SL Information Outlet, Category 6, UTP, with Dust Cover, Almond	Almond
1375187-2	NETCONNECT SL Information Outlet, Category 6, UTP, with Dust Cover, Black	Black
1-1375187-3	NETCONNECT SL Information Outlet, Category 6, UTP, with Dust Cover, White	White
1375187-4	NETCONNECT SL Information Outlet, Category 6, UTP, with Dust Cover, Gray	Gray
1375187-5	NETCONNECT SL Information Outlet, Category 6, UTP, with Dust Cover, Orange	Orange
1375187-6	NETCONNECT SL Information Outlet, Category 6, UTP, with Dust Cover, Blue	Blue
1375187-7	NETCONNECT SL Information Outlet, Category 6, UTP, with Dust Cover, Red	Red
1375187-8	NETCONNECT SL Information Outlet, Category 6, UTP, with Dust Cover, Yellow	Yellow
1375187-9	NETCONNECT SL Information Outlet, Category 6, UTP, with Dust Cover, Green	Green
1-1375187-0	NETCONNECT SL Information Outlet, Category 6, UTP, with Dust Cover, Violet	Violet



# Copper solutions

## Category 6 U/UTP



### NETCONNECT SL SERIES INFORMATION OUTLET, PACKAGED WITH A CLIPSAL BEZEL, FIT TO CLIPSAL/SCHNEIDER FACEPLATES

PART NUMBER	DESCRIPTION	COLOR
760238473	NETCONNECT SL Information Outlet with Clipsal bezel, Category 6, UTP, with Dust Cover, White	Almond
760238472	NETCONNECT SL Information Outlet with Clipsal bezel, Category 6, UTP, without Dust Cover, White	Black
760238471	NETCONNECT SL Information Outlet with Clipsal bezel, Category 6, UTP, without Dust Cover, Black	Black



### NETCONNECT KJ SERIES INFORMATION OUTLET, WITHOUT DUST COVER, TO USE WITH KEYSTONE FACEPLATES OF OTHER SUPPLIERS

PART NUMBER	DESCRIPTION	COLOR
2291216-1	NETCONNECT KJ Keystone Information Outlet, Category 6, UTP, without Dust Cover, Almond	Almond
2291216-2	NETCONNECT KJ Keystone Information Outlet, Category 6, UTP, without Dust Cover, Black	Black
1-2291216-3	NETCONNECT KJ Keystone Information Outlet, Category 6, UTP, without Dust Cover, White	White



### NETCONNECT CATEGORY 6 U/UTP, HIGH-DENSITY SOLUTION

PART NUMBER	DESCRIPTION	RATE	COLOR
760237060	NPP-UDDM-SL-1U-48: NETCONNECT DDM Patch Panel, Category 6, UTP, 1U, 48 port	1U, Straight	Black
760237061	NPPA-UDDM-SL-1U-48: NETCONNECT Angled DDM Patch Panel, Category 6, UTP, 1U, 48 port	1U, Angled	Black
CO166S2-01M###	CommScope Patch cord, Category 6, 4pair, 28AWG, Stranded U/UTP, CM-LS, Black, X m	CM-LS	Black
CO166S2-02M###	CommScope Patch cord, Category 6, 4pair, 28AWG, Stranded U/UTP, CM-LS, Light Blue, X m	CM-LS	Light Blue
CO166S2-03M###	CommScope Patch cord, Category 6, 4pair, 28AWG, Stranded U/UTP, CM-LS, Gray, X m	CM-LS	Gray
CO166S2-04M###	CommScope Patch cord, Category 6, 4pair, 28AWG, Stranded U/UTP, CM-LS, Spring Green, X m	CM-LS	Spring Green
CO166S2-07M###	CommScope Patch cord, Category 6, 4pair, 28AWG, Stranded U/UTP, CM-LS, Red, X m	CM-LS	Red
CO166S2-08M###	CommScope Patch cord, Category 6, 4pair, 28AWG, Stranded U/UTP, CM-LS, White, X m	CM-LS	White
CO166S2-09M###	CommScope Patch cord, Category 6, 4pair, 28AWG, Stranded U/UTP, CM-LS, Yellow, X m	CM-LS	Yellow
CO166S2-0ZM###	CommScope Patch cord, Category 6, 4pair, 28AWG, Stranded U/UTP, CM-LS, Blue, X m	CM-LS	Blue

NOTE: Replace X with length in met. Eg: 1 = 1m, 2 = 2m, 3 = 3m, 5= 5m

# Copper solutions

## Category 6 U/UTP



### NETCONNECT CATEGORY 6 U/UTP PATCH CORDS

PART NUMBER	DESCRIPTION	RATE	COLOR
NPC06UVDB-BL###F	NETCONNECT Patch cord, Category 6, 4pair, Stranded U/UTP, CM, Blue, X ft	CM	Blue
NPC06UVDB-YL###F	NETCONNECT Patch cord, Category 6, 4pair, Stranded U/UTP, CM, Yellow, X ft	CM	Yellow
NPC06UVDB-RD###F	NETCONNECT Patch cord, Category 6, 4pair, Stranded U/UTP, CM, Red, X ft	CM	Red
NPC06UVDB-OR###F	NETCONNECT Patch cord, Category 6, 4pair, Stranded U/UTP, CM, Orange, X ft	CM	Orange
NPC06UVDB-GY###F	NETCONNECT Patch cord, Category 6, 4pair, Stranded U/UTP, CM, Gray, X ft	CM	Gray
NPC06UVDB-WT###F	NETCONNECT Patch cord, Category 6, 4pair, Stranded U/UTP, CM, White, X ft	CM	White
NPC06UVDB-GN###F	NETCONNECT Patch cord, Category 6, 4pair, Stranded U/UTP, CM, Green, X ft	CM	Green
NPC06UVDB-BK###F	NETCONNECT Patch cord, Category 6, 4pair, Stranded U/UTP, CM, Black, X ft	CM	Black
NCC31URDB-WT###F	NETCONNECT Patch cord, Category 6, 4pair, Solid U/UTP, CM, White, X ft	CMR	White
NCC31URDB-BL###F	NETCONNECT Patch cord, Category 6, 4pair, Solid U/UTP, CM, Blue, X ft	CMR	Blue
NCC31URDB-GY###F	NETCONNECT Patch cord, Category 6, 4pair, Solid U/UTP, CM, Gray, X ft	CMR	Gray

NOTE: Replace ### with length in feet. Eg: 004 = 4F, 007 = 7F, 010 = 10F.  
Stranded Cord supports length up to 30 meters. Solid Cord support length up to 100 meters.

PART NUMBER	DESCRIPTION	RATE	COLOR
NPC06UZDB-WT###M	NETCONNECT Patch cord, Category 6, 4pair, Stranded U/UTP, LSZH, White, X m	LSZH	White
NPC06UZDB-GY###M	NETCONNECT Patch cord, Category 6, 4pair, Stranded U/UTP, LSZH, Gray, X m	LSZH	Gray
NPC06UZDB-OR###M	NETCONNECT Patch cord, Category 6, 4pair, Stranded U/UTP, LSZH, Orange, X m	LSZH	Orange
NPC06UZDB-BL###M	NETCONNECT Patch cord, Category 6, 4pair, Stranded U/UTP, LSZH, Blue, X m	LSZH	Blue
NPC06UZDB-YL###M	NETCONNECT Patch cord, Category 6, 4pair, Stranded U/UTP, LSZH, Yellow, X m	LSZH	Yellow
NPC06UZDB-RD###M	NETCONNECT Patch cord, Category 6, 4pair, Stranded U/UTP, LSZH, Red, X m	LSZH	Red
NPC06UZDB-GN###M	NETCONNECT Patch cord, Category 6, 4pair, Stranded U/UTP, LSZH, Green X m	LSZH	Green
NCC37UZDB-WT###F	NETCONNECT Patch cord, Category 6, 4pair, Solid U/UTP, LSZH, White, X ft	LSZH	White
NCC37UZDB-OR###F	NETCONNECT Patch cord, Category 6, 4pair, Solid U/UTP, LSZH, Orange, X ft	LSZH	Orange
NCC37UZDB-RD###F	NETCONNECT Patch cord, Category 6, 4pair, Solid U/UTP, LSZH, Red, X ft	LSZH	Red
NCC37UZDB-YL###F	NETCONNECT Patch cord, Category 6, 4pair, Solid U/UTP, LSZH, Yellow, X ft	LSZH	Yellow
NCC37UZDB-GN###F	NETCONNECT Patch cord, Category 6, 4pair, Solid U/UTP, LSZH, Green, X ft	LSZH	Green
NCC37UZDB-GY###F	NETCONNECT Patch cord, Category 6, 4pair, Solid U/UTP, LSZH, Gray, X ft	LSZH	Gray
NCC37UZDB-OL###F	NETCONNECT Patch cord, Category 6, 4pair, Solid U/UTP, LSZH, Violet, X ft	LSZH	Violet
NCC37UZDB-BL###F	NETCONNECT Patch cord, Category 6, 4pair, Solid U/UTP, LSZH, Blue, X ft	LSZH	Blue

NOTE: Replace ### with length in met. Eg: 001 = 1m, 002 = 2m, 003 = 3m, 005= 5m.  
Stranded Cord supports length up to 30 meters. Solid Cord support length up to 100 meters.

# Copper solutions

## Category 6 F/UTP



### NETCONNECT CATEGORY 6 F/UTP CABLES

PART NUMBER	DESCRIPTION	RATE	COLOR
874043904/10	NETCONNECT CS34P, Category 6 Cable, 4 pair, 23 AWG, F/UTP, Plenum, 1000FT, Reel, Blue	Plenum	Blue
884016408/10	NETCONNECT CS34CM, Category 6 Cable, 4 pair, 23 AWG, F/UTP, CM, 305M, Reel, white	CM	White
884033508/10	NETCONNECT CS34CM, Category 6 Cable, 4 pair, 23 AWG, F/UTP, CM, 305M, Reel, Blue	CM	Blue
884049808/10	NETCONNECT CS34Z1, Category 6 Cable, 4 pair, 23 AWG, F/UTP, LSZH, 305M, Reel, White	LSZH	White
884049858/16	NETCONNECT CS34Z1, Category 6 Cable, 4 pair, 23 AWG, F/UTP, LSZH, 500M, Reel, White	LSZH	White
884035408/10	NETCONNECT CS34Z1, Category 6 Cable, 4 pair, 23 AWG, F/UTP, LSZH, 305M, Reel, Gray	LSZH	Gray
884030004/10	NETCONNECT CS34R, Category 6 Cable, 4 pair, 23 AWG, F/UTP, LSZH, 1000FT, Reel, White	Riser	White



### COMMSCOPE SL DISCRETE DISTRIBUTION MODULE (DDM) PATCH PANELS, UNLOADED

PART NUMBER	DESCRIPTION	SPACE	PORT	TYPE
760237046	CPP-SDDM-SL-1U-24: CommScope® SL DDM Patch Panel, STP, 1U, 24 port, Straight	1U	24	Straight
760237047	CPP-SDDM-SL-2U-48: CommScope® SL DDM Patch Panel, STP, 2U, 48 port Straight	2U	48	Straight
760237048	CPP-SDDM-SL-1U-24: CommScope® SL DDM Patch Panel, STP, 1U, 24 port, Angled	1U	24	Angled
760237049	CPP-SDDM-SL-2U-48: CommScope® SL DDM Patch Panel, STP, 2U, 48 port Angled	2U	48	Angled
760237050	CPPR-SDDM-SL-1U-24: CommScope® SL DDM Patch Panel, STP, 1U, 24 port, Recessed Angled	1U	24	Recessed Angled
760237051	CPPR-SDDM-SL-2U-48: CommScope® SL DDM Patch Panel, STP, 2U, 48 port, Recessed Angled	2U	48	Recessed Angled



### NETCONNECT CATEGORY 6 FTP, HIGH-DENSITY SOLUTION

PART NUMBER	DESCRIPTION	SOLUTION
760250903	CPP-6-1U-E-HD	Mix Media Option
760238659	CPP-FMA-KIT-4PK Module Adapter (4 pcs) for Fiber Adapters, Black	Mix Media Option
760243427	CPP-FMAE-KIT-4PK BLK	Mix Media Option
760250890	CPP-6-SDDM-SLHD-KIT-4PK	Mix Media Option

# Copper solutions

## Category 6 F/UTP



NETCONNECT SLX SERIES INFORMATION OUTLET WITH DUST COVER		
PART NUMBER	DESCRIPTION	COLOR
1-2153364-3	AMP-TWIST SLX Series Modular Information Outlet, category 6, shielded , 4 Pair, with dust cover, Alpine White	Alpine White
2153364-9	AMP-TWIST SLX Series Modular Information Outlet, category 6, shielded , 4 Pair, with dust cover, green	Green
2153364-5	AMP-TWIST SLX Series Modular Information Outlet, category 6, shielded , 4 Pair, with dust cover, Orange	Orange
2153364-4	AMP-TWIST SLX Series Modular Information Outlet, category 6, shielded , 4 Pair, with dust cover, Gray	Gray
2153364-7	AMP-TWIST SLX Series Modular Information Outlet, category 6, shielded , 4 Pair, with dust cover, Red	Red
2153364-1	AMP-TWIST SLX Series Modular Information Outlet, category 6, shielded , 4 Pair, with dust cover, Almond	Almond
2153364-8	AMP-TWIST SLX Series Modular Information Outlet, category 6, shielded , 4 Pair, with dust cover, yellow	Yellow
2153364-2	AMP-TWIST SLX Series Modular Information Outlet, category 6, shielded , 4 Pair, with dust cover, Black	Black
2153364-6	AMP-TWIST SLX Series Modular Information Outlet, category 6, shielded , 4 Pair, with dust cover, Blue	Blue

NETCONNECT SLX SERIES INFORMATION OUTLET WITHOUT DUST COVER		
PART NUMBER	DESCRIPTION	COLOR
2153448-9	AMP-TWIST SLX Series Modular Information Outlet, category 6, shielded , 4 Pair, without dust cover, Green	Green
2153448-4	AMP-TWIST SLX Series Modular Information Outlet, category 6, shielded , 4 Pair, without dust cover, Gray	Gray
2153448-8	AMP-TWIST SLX Series Modular Information Outlet, category 6, shielded , 4 Pair, without dust cover, Yellow	Yellow
1-2153448-3	AMP-TWIST SLX Series Modular Information Outlet, category 6, shielded , 4 Pair, without dust cover, Alpine White	Alpine White
2153448-5	AMP-TWIST SLX Series Modular Information Outlet, category 6, shielded , 4 Pair, without dust cover, Orange	Orange
2153448-1	AMP-TWIST SLX Series Modular Information Outlet, category 6, shielded , 4 Pair, without dust cover, Almond	Almond
2153448-6	AMP-TWIST SLX Series Modular Information Outlet, category 6, shielded , 4 Pair, without dust cover, Blue	Blue
2153448-7	AMP-TWIST SLX Series Modular Information Outlet, category 6, shielded , 4 Pair, without dust cover, Red	Red
2153448-2	AMP-TWIST SLX Series Modular Information Outlet, category 6, shielded , 4 Pair, without dust cover, Black	Black



NETCONNECT CATEGORY 6 F/UTP PATCH CORDS			
PART NUMBER	DESCRIPTION	RATE	COLOR
NPC06SZDB-WT###M	NETCONNECT Patch cord, Category 6, 4pair, Stranded S/FTP, LSZH, White, X m	LSZH	White
NPC06SZDB-GY###M	NETCONNECT Patch cord, Category 6, 4pair, Stranded S/FTP, LSZH, Grey, X m	LSZH	Grey
NPC06SZDB-BL###M	NETCONNECT Patch cord, Category 6, 4pair, Stranded S/FTP, LSZH, Blue, X m	LSZH	Blue
NPC06SZDB-YL###M	NETCONNECT Patch cord, Category 6, 4pair, Stranded S/FTP, LSZH, Yellow, X m	LSZH	Yellow
NPC06SZDB-RD###M	NETCONNECT Patch cord, Category 6, 4pair, Stranded S/FTP, LSZH, Red, X m	LSZH	Red
NPC06SZDB-GN###M	NETCONNECT Patch cord, Category 6, 4pair, Stranded S/FTP, LSZH, Green, X m	LSZH	Green
NPC06SZDB-OR###M	NETCONNECT Patch cord, Category 6, 4pair, Stranded S/FTP, LSZH, Orange, X m	LSZH	Orange
NPC06SZDB-BK###M	NETCONNECT Patch cord, Category 6, 4pair, Stranded S/FTP, LSZH, Black, X m	LSZH	Black

NOTE: Replace ### with length in met. Eg: 001 = 1m, 002 = 2m, 003 = 3m, 005= 5m

# Copper solutions

## Category 5e U/UTP



NETCONNECT CATEGORY 5E U/UTP CABLES				
PART NUMBER	DESCRIPTION	RATE	TYPE	
6-219590-2	NETCONNECT Category 5e, 4 pair, 24 AWG, U/UTP, CM , 1000 ft, White	CM	U/UTP	
884048914/10	NETCONNECT Category 5e, 4 pair, 24 AWG, U/UTP, LSZH, 305m, Pull-box, White	LSZH	U/UTP	
219413-2	NETCONNECT Category 5e, 4 pair, 24 AWG, F/UTP, 305m, Pull-box, White	PVC	F/UTP	
1499418-1	NETCONNECT TE510R25, Category 5e, 25 Pair, 24 AWG, U/UTP, CMR, 1000ft, Reel, White	CMR	U/UTP	



COMMSCOPE SL DISCRETE DISTRIBUTION MODULE (DDM) PATCH PANELS, UNLOAD				
PART NUMBER	DESCRIPTION	SPACE	PORTS	TYPE
760237040	CPP-UDDM-SL-1U-24: CommScope® SL DDM Patch Panel, UTP, 1U, 24 port, Straight	1U	24	Straight
760237041	CPP-UDDM-SL-2U-48: CommScope® SL DDM Patch Panel, UTP, 2U, 48 port Straight	2U	48	Straight
760237044	CPPR-UDDM-SL-1U-24: CommScope® SL DDM Patch Panel, UTP, 1U, 24 port, Recessed Angled	1U	24	Angled
760237045	CPPR-UDDM-SL-2U-48: CommScope® SL DDM Patch Panel, UTP, 2U, 48 port, Recessed Angled	2U	48	Angled

\*Customer should order 9-1375191-2 (24 pcs bulk pack) to have a fully loaded patch panel.



NETCONNECT SL SERIES INFORMATION OUTLET WITHOUT DUST COVER		
PART NUMBER	DESCRIPTION	COLOR
1375191-1	NETCONNECT Category 5e information outlet, 110 SL, without Dust Cover, UTP, Almond	Almond
1375191-2	NETCONNECT Category 5e information outlet, 110 SL, without Dust Cover, UTP, Black	Black
1375191-4	NETCONNECT Category 5e information outlet, 110 SL, without Dust Cover, UTP, Gray	Gray
1375191-5	NETCONNECT Category 5e information outlet, 110 SL, without Dust Cover, UTP, Orange	Orange
1375191-6	NETCONNECT Category 5e information outlet, 110 SL, without Dust Cover, UTP, Blue	Blue
1375191-7	NETCONNECT Category 5e information outlet, 110 SL, without Dust Cover, UTP, Red	Red
1375191-8	NETCONNECT Category 5e information outlet, 110 SL, without Dust Cover, UTP, Yellow	Yellow
1375191-9	NETCONNECT Category 5e information outlet, 110 SL, without Dust Cover, UTP, Green	Green
9-1375191-2	NETCONNECT Category 5e information outlet, 110 SL, without Dust Cover, UTP, Black, in bulk pack	Black
1-1375191-3	NETCONNECT Category 5e information outlet, 110 SL, without Dust Cover, UTP, Alpine white	Alpine white

\*Please contact us for other Colors or Information Outlets with Dust Cover

# Copper solutions

## Category 5e U/UTP



### NETCONNECT KJ SERIES INFORMATION OUTLET WITHOUT DUST COVER, TO USE WITH KEYSTONE FACEPLATES OF OTHER SUPPLIERS

PART NUMBER	DESCRIPTION	TYPE
1-2291217-3	NETCONNECT KJ Series, Keystone UTP Category 5e, Modular Information Outlet, without Dust Cover, White	White
2291217-1	NETCONNECT KJ Series, Keystone UTP Category 5e, Modular Information Outlet, without Dust Cover, Almond	Almond
2291217-2	NETCONNECT KJ Series, Keystone UTP Category 5e, Modular Information Outlet, without Dust Cover, Black	Black

\*Please contact us for other Colors or Information Outlets with Dust Cover



### CATEGORY 5E U/UTP PATCH CORDS

PART NUMBER	DESCRIPTION	RATE	COLOR
CO155D2-0ZF###	CO5E-U-CM-BL: CommScope Patch cord Category 5e, 4pair, Stranded U/UTP, CM, Blue, X ft	CM	Blue
CO155D2-09F###	CO5E-U-CM-YL: CommScope Patch cord Category 5e, 4pair, Stranded U/UTP, CM, Yellow, X ft	CM	Yellow
CO155D2-07F###	CO5E-U-CM-RD: CommScope Patch cord Category 5e, 4pair, Stranded U/UTP, CM, Red, X ft	CM	Red

NOTE: Replace ### with length in feet. Eg: 004 = 4Ft, 007 = 7Ft, 010 = 10Ft



PART NUMBER	DESCRIPTION	RATE	COLOR
CO155E2-08M###	CO5E-U-Z-WH: CommScope Patch cord Category 5e, 4pair, Stranded U/UTP, LSZH, White, X m	LSZH	White
CO155E2-0CM###	CO5E-U-Z-GY: CommScope Patch cord Category 5e, 4pair, Stranded U/UTP, LSZH, Gray, X m	LSZH	Gray
CO155E2-06M###	CO5E-U-Z-OR: CommScope Patch cord Category 5e, 4pair, Stranded U/UTP, LSZH, Orange, X m	LSZH	Orange

NOTE: Replace ### with length in met. Eg: 001 = 1m, 002 = 2m, 003 = 3m, 005= 5m

# Copper solutions

## Telephone – ADSL Systems



### NETCONNECT CATEGORY 3 MULTIPAIR CABLES

PAIR	DESCRIPTION	JACKET	1000FT (305M) / REEL	1640FT (500M) / REEL	3300FT (1000M) / REEL
25	NETCONNECT 310 Series Copper Cable, Category 3, 25 pair, U/UTP, CMR rated, Gray	CMR	9-57242-1	6-57242-1	2-57242-1
25	NETCONNECT 310 Series Copper Cable, Category 3, 25 pair, U/UTP, LSZH rated, Gray	LSZH	9-1427315-1	9-1427315-3	9-1427315-2
50	NETCONNECT 310 Series Copper Cable, Category 3, 50 pair, U/UTP, CMR rated, Gray	CMR	9-57313-1	6-57313-1	2-57313-1
50	NETCONNECT 310 Series Copper Cable, Category 3, 50 pair, U/UTP, LSZH rated, Gray	LSZH	9-1427250-1	9-1427250-2	9-1427250-3
100	NETCONNECT 310 Series Copper Cable, Category 3, 100 pair, U/UTP, CMR rated, Gray	CMR	9-57315-1	6-57315-1	2-57315-1
100	NETCONNECT 310 Series Copper Cable, Category 3, 100 pair, U/UTP, LSZH rated, Gray	LSZH	9-1427251-1	9-1427251-2	–



### NETCONNECT SL INFORMATION OUTLET, RJ11

PART NUMBER	DESCRIPTION	COLOR
1375192-1	NETCONNECT SL Information Outlet, Category 3, RJ11, UTP, Without dust cover, Almond	Almond
1375192-2	NETCONNECT SL Information Outlet, Category 3, RJ11, UTP, without dust cover, Black	Black
1-1375192-3	NETCONNECT SL Information Outlet, Category 3, RJ11, UTP, without dust cover, White	White



### LSA-PLUS® DISCONNECT MODULE

PART NUMBER	DESCRIPTION	PAIR
60891121-02	6089 1 121-02: CommScope LSA-PLUS® Series 2 Disconnection Module, 10-pair, Contact Special Brass, Silver plated, PROFIL mounting	10
64685061-00	6468 5 061-00: Highband® Disconnection Module, category 5e, PROFIL®, 10-pair	10
64685060-08	6468 5 060-08: Highband® Ultim8 Disconnection Module, 8-pair, with jumper rings, category 6	8

# Copper solutions

## Telephone – ADSL Systems

### LSA-PLUS® DISTRIBUTION RACK & BACKMOUNT FRAME (UNLOADED)

PART NUMBER	DESCRIPTION	PAIRS
<b>Distribution Rack</b>		
64201013-00	6420 1 013-00: LSA-PLUS® Distribution Rack, for holding standard and PROFIL modules series 2, black	1380
<b>Backmount Frame for 19' Rack</b>		
64271017-01	6427 1 017-01: LSA-Plus® Backmount Frame, 19 in, 15-way, 3 RU, recessed	150
64271007-01	6427 1 007-01: LSA-Plus® Backmount Frame, 19 in, 18-way, 4 RU, recessed	180
64271007-01	6427 1 007-01: LSA-Plus® Backmount Frame, 19 in, 18-way, 4 RU, recessed	180



### LSA-PLUS® WALL BOXES (UNLOADED)

PART NUMBER	DESCRIPTION	PAIRS
64282421-00	6428 2 421-00: LSA-PLUS® Connection Box, 500 Series, holds up to 1 x 10 Series 2 LSA-PLUS modules	100
64282418-00	6428 2 418-00: LSA-PLUS® Connection Box, 500 Series, holds up to 2 x 10 Series 2 LSA-PLUS modules	200
64282419-00	6428 2 419-00: LSA-PLUS® Connection Box, 500 Series, holds up to 2 x 20 Series 2 LSA-PLUS modules	400
64282424-00	6428 2 424-00: LSA-PLUS® Connection Box, 520 Series, holds up to 2 x 34 Series 2 LSA-PLUS modules	680
64282425-00	6428 2 425-00: LSA-PLUS® Connection Box, 530 Series, holds up to 3 x 34 Series 2 LSA-PLUS modules	1020



### COMPROTECT® OVERVOLTAGE PROTECTION

PART NUMBER	DESCRIPTION	PAIRS
EG0529-001	8800 1 010-20: 1/2 ComProtect® CGB180A3 - Voice - Single pair protection plug 5-point w/ PTC - use w/ LSA series 2 (Box of 10 pcs w/ earth bar)	1
CZ7403-000	C6089 2 023-08: LSA-PLUS® Overvoltage Arrestor Magazine, 10-pair, loaded, 5kA, 230V	10

### LSA-PLUS® INSERTION TOOL WITH SENSOR

PART NUMBER	DESCRIPTION
64172055-01	6417 2 055-01: LSA-PLUS® Insertion Tool with Sensor





# Copper solutions

## Modular RJ45 Plug & Termination Tools



### NETCONNECT CATEGORY 6A RJ45 MODULAR PLUG & TOOL

PART NUMBER	DESCRIPTION	CATEGORY	TYPE
Connector (Used with Cat6A UTP CS44 only)			
6-2843007-1	MP-6AU-Plug-A-1: Modular Plug, Category 6A/6, Unshielded, Cond Insulation OD - 0.99mm, 100/bag	Cat.6	Unshielded
2843018-3	MP-6AU-Boot-71-1: Integrated Boot and Pair Manager for MP-6AU, 71 mm, transparent	-	Boot



### TOOL KITS

PART NUMBER	DESCRIPTION	TYPE
2-231652-0	NETCONNECT Modular Plug Hand Tool without Dies	Tool
1-853400-5	NETCONNECT Modular Plug Die Only, 8-Position, MP-6AU Plugs, Pink Dot	Die Set



### NETCONNECT CATEGORY 6 RJ45 MODULAR PLUG & TOOL

PART NUMBER	DESCRIPTION	CATEGORY	TYPE
6-2111979-3	NETCONNECT Modular Plug Kit, Category 6, shielded, 8-position, 5.1 – 6.0 mm max cable OD, 100/bag	Cat.6	Shielded
6-2111989-3	NETCONNECT Modular Plug Kit, Category 6, shielded, 8-position, 5.7 – 7.0 mm max cable OD, 100/bag	Cat.6	Shielded



### TOOL KITS

PART NUMBER	DESCRIPTION	TYPE
790163-5	NETCONNECT Modular Plug Hand Tool with 8-Position Die, Category 6, Shielded Plugs 5.7- 7.0 mm	Tool

# Copper solutions

## Modular RJ45 Plug & Termination Tools

NETCONNECT CATEGORY 5E RJ45 MODULAR PLUG & TOOL			
PART NUMBER	DESCRIPTION	CATEGORY	TYPE
6-569550-3	NETCONNECT Modular Plug Kit, Category 5e, shielded, 8-position, round, 5.6 mm OD, 100/bag	Cat.5e	Shielded
6-569530-3	NETCONNECT Modular Plug Kit, Category 5, shielded, 8-position, round, 5.1 mm OD, 100/bag	Cat.5	Shielded
6-554720-3	NETCONNECT Modular Plug Kit, Category 5, unshielded, 8-position, flat oval, 2.54 x 8.89 mm OD, 100/bag	Cat.5	Unshielded
6-569278-3	Modular Plug Kit, category 5e, 8P/8C, unshielded, 4.8 – 5.6 mm max cable information outlet OD, 8-position, 100/bag	Cat.5	Unshielded



TOOL KITS			
PART NUMBER	DESCRIPTION	CATEGORY	TYPE
2-231652-1	NETCONNECT Modular Plug Hand Tool with 8-Position Die, Category 5, Black Dot	Cat.5	Tool
2-231652-0	NETCONNECT Modular Plug Hand Tool without Dies	–	Tool
1-853400-0	NETCONNECT Modular Plug Die Only, 8-Position, Category 5e, White Dot	Cat.5e	Die Set
853400-1	NETCONNECT Modular Plug Die Only, 8-Position, Category 5, Black Dot	Cat.5	Die Set



NETCONNECT MODULAR BOOT			
PART NUMBER	DESCRIPTION	CATEGORY	COLOR
Transparent Boot, compatible with color clips			
2843048-1	NETCONNECT Modular Plug Boot, 8-Position Plug, Slim-line, Transparent, 5.7 mm max cable OD	Cat.5 & Cat.5e/ Unshielded	Transparent
2111797-1	NETCONNECT Modular Plug Boot, 8-Position Plug, Slim-line, Transparent, 6.2mm Max Cable OD	Cat.5 & Cat.5e/ Unshielded	Transparent
2843033-3	NETCONNECT Modular Plug Boot, 8-Position Plug, Slim-line, Transparent, 5.7 to 7.0 mm Cable OD	Cat.6/ Shielded	Transparent



MODULAR PLUG COLOR CLIP (USED WITH NPC PATCH CORDS)		
PART NUMBER	DESCRIPTION	COLOR
2843022-5	NETCONNECT Modular Plug Color Clip, Orange, 50 pcs	Orange
2843022-6	NETCONNECT Modular Plug Color Clip, Blue, 50 pcs	Blue
2843022-7	NETCONNECT Modular Plug Color Clip, Red, 50 pcs	Red
2843022-8	NETCONNECT Modular Plug Color Clip, Yellow, 50 pcs	Yellow
2843022-9	NETCONNECT Modular Plug Color Clip, Green, 50 pcs	Green
2843022-1	NETCONNECT Modular Plug Color Clip, Almond, 50 pcs	Almond
2843022-2	NETCONNECT Modular Plug Color Clip, Black, 50 pcs	Black
2843022-3	NETCONNECT Modular Plug Color Clip, White, 50 pcs	White
2843022-4	NETCONNECT Modular Plug Color Clip, Gray, 50 pcs	Gray
2843022-5	NETCONNECT Modular Plug Color Clip, Orange, 50 pcs	Orange

# Copper solutions

## Faceplate & Accessories

NETCONNECT FACEPLATES US STYLE			
PART NUMBER	DESCRIPTION	PORT	COLOR
272368-1	NETCONNECT Faceplate, single port, shutter, US style	1	Almond
272368-2	NETCONNECT Faceplate, dual port, shutter, US style	2	Almond
<b>Decor Faceplate</b>			
2-1427030-1	NETCONNECT Decor faceplate, single port, shutter, US style	1	White
2-1427030-2	NETCONNECT Decor faceplate, dual port, shutter, US style	2	White
2-1427030-3	NETCONNECT Decor faceplate, triple port, shutter, US style	3	White
<b>4 Ports Faceplate</b>			
2111011-1	NETCONNECT Faceplate, labeled, 1-gang, 4 port, almond, US style	4	Almond
1-2111011-3	NETCONNECT Faceplate, labeled, 1-gang, 4 port, alpine white, US style	4	White
<b>Angled Faceplate</b>			
1-1375155-3	NETCONNECT Faceplate, 2 port, angled, flush mount, US style	2	White

ECO-FRIENDLY FACEPLATES	
MID	DESCRIPTION
760246283	M12FR-262 Unshuttered Faceplate, 2-port, White, Eco-Bulk Package
760246281	M12D-F-262 Faceplate, 2-port, White, Eco-Bulk Packaging
760246288	M14D-F-262 Double Faceplate, 4-port, White, Eco-Bulk Package



NETCONNECT FACEPLATES UK STYLE	
MID	DESCRIPTION
760245388	Faceplate Kit, 1 port, SL/SLX, BS, White
760245389	Faceplate Kit, 2 ports, SL/SLX, BS, White
760245390	Faceplate Kit, 4 ports, SL/SLX, BS, White
760245679	FP KIT, BS, 1 port, Angled Shuttered
760245680	FP KIT, BS, 2 port, Angled Shuttered



NETCONNECT SINGLE AND DUAL OUTLETS 45 X 45 MM ("MOSAIC"), USED WITH LEGRAND FACEPLATE		
PART NUMBER	DESCRIPTION	COLOR
1711276-1	Dual Port Outlet, shuttered flat, for 2 SL information outlets, 45 x 45 mm	White
1711277-1	Single Port Outlet, shuttered flat, for 1 SL information outlet, 45 x 45 mm	White
1711349-1	Single Port Outlet, shuttered flat, for 1 SL information outlet, 22.5 x 45 mm	White



# Copper solutions

## Faceplate & Accessories



### NETCONNECT BOXES

PART NUMBER	DESCRIPTION	COLOR
<b>Surface &amp; Ceiling Mount Box</b>		
1116697-1	NETCONNECT Surface Mount Office Box, for SL information outlets, 1 port, unloaded, Almond	Almond
1116698-1	NETCONNECT Surface Mount Office Box, for SL information outlets, 2 port, unloaded, Almond	Almond
<b>Zone Box</b>		
1933671-2	NETCONNECT Surface Mount Module, 4 port, black	Black
1933674-2	NETCONNECT Surface Mount Module, 6 port, black	Black
1479358-2	NETCONNECT Surface Mount Module, 12 port, black	Black
1479398-1	Surface Mount Module Magnet (used with 1479358-2)	Black
<b>Meeting Room Solution</b>		
1-1671163-1	NETCONNECT Consolidation Point Enclosure, 4-port, twist/SL information outlet	Black
2111500-2	SL Series HDMI Coupler Insert, black	Black
1-1499836-1	NETCONNECT SL Series, Adapter SC Simplex, Single-mode/Multimode, Almond	Almond
1933286-6	NETCONNECT SL Fiber Optic Insert Adapter, LC, duplex, singlemode/multimode, aqua	Aqua

# Copper solutions

## Faceplate & Accessories



### NETCONNECT CONSOLIDATION POINT

PART NUMBER	DESCRIPTION	MODULE
<b>UTP Copper (Support Cat6A, Cat6, Cat5e)</b>		
64501105-21	6450 1 105-21: Highband® Consolidation Point, category 6A, 100-pair	100 Pairs
<b>Mixed Copper &amp; Fiber Box</b>		
406771-1	NETCONNECT Consolidation point assembly (unloaded)	4
1479322-1	NETCONNECT Consolidation point assembly, center feed, dual support, foor box (unloaded)	6
1479696-1	NETCONNECT Unshielded Multimedia Module, 6 ports, accepts SL Series inserts	1
1499836-9	NETCONNECT SL Series, Adapter SC Simplex, Single-mode/Multimode, Green	-



### NETCONNECT SL TOOL

PART NUMBER	DESCRIPTION
1725150-6	SL SERIES INFORMATION OUTLET TOOL KIT - LARGE DIA

# Copper solutions

## Horizontal Cable Management

### HORIZONTAL CABLE MANAGEMENT

PART NUMBER	DESCRIPTION
760072942	CommScope Cable Management Panel, Horizontal, Metal Finger Duct, 1U, black
760072959	CommScope Cable Management Panel, Horizontal, Metal Finger Duct, 2U, black
760038240	CommScope Cable Management Panel, Horizontal, Metal 4 Ring, 1U, black
1375163-1	NETCONNECT Cable Management Panel, Horizontal, Metal Finger Duct, 2U, black



760072942



760072959



760038240



1375163-1

# Copper solutions

## Outdoor Application

### NETCONNECT CATEGORY 5E

PART NUMBER	DESCRIPTION	JACKET	TYPE
1427318-1	NETCONNECT Category 5e, 4 pair, 24AWG, U/UTP, PE, 1000ft, Pull-box, black	PE	U/UTP
1427322-1	NETCONNECT Category 5e, 4 pair, 24AWG, F/UTP, PE, 1000ft, Pull-box, black	PE	F/UTP

### NETCONNECT CATEGORY 6

PART NUMBER	DESCRIPTION	JACKET	TYPE
1427319-1	NETCONNECT Category 6, 4 pair, 23AWG, U/UTP, PE, 1000ft, Pull-box, black	PE	U/UTP



### NETCONNECT CATEGORY 6A F/UTP

PART NUMBER	DESCRIPTION	JACKET	TYPE
CO11192-01F###	NETCONNECT Patch cord, Category 6A, 4pair, Stranded F/UTP, LSZH, Black, X ft	PE	F/UTP

NOTE: Replace ### with length in feet. Eg: 004 = 4F, 007 = 7F, 010 = 10F

# Powered Fiber solutions



<b>COMMSCOPE POWERED FIBER CABLE, OUTDOOR</b>			
PART NUMBER	DESCRIPTION	JACKET	TYPE
PFC-S02O12	CommScope Powered Fiber Cable, OS2, 2 Fibers, Outdoor, 12AWG Conductor	OS2	2
PFC-S02O16	CommScope Powered Fiber Cable, OS2, 2 Fibers, Outdoor, 16AWG Conductor	OS2	2
PFC-S04O12	CommScope Powered Fiber Cable, OS2, 4 Fibers, Outdoor, 12AWG Conductor	OS2	4
PFC-S04O16	CommScope Powered Fiber Cable, OS2, 4 Fibers, Outdoor, 16AWG Conductor	OS2	4
PFC-S12O12	CommScope Powered Fiber Cable, OS2, 12 Fibers, Outdoor, 12AWG Conductor	OS2	12
PFC-S12O16	CommScope Powered Fiber Cable, OS2, 12 Fibers, Outdoor, 16AWG Conductor	OS2	12
PFC-302O12	CommScope Powered Fiber Cable, OM3, 2 Fibers, Outdoor, 12AWG Conductor	OM3	2
PFC-302O16	CommScope Powered Fiber Cable, OM3, 2 Fibers, Outdoor, 16AWG Conductor	OM3	2



<b>COMMSCOPE POWERED FIBER CABLE, INDOOR/OUTDOOR</b>			
PART NUMBER	DESCRIPTION	JACKET	TYPE
PFC-S02L12	CommScope Powered Fiber Cable, OS2, 2 Fibers, Indoor/Outdoor, 12AWG Conductor	OS2	2
PFC-S02L16	CommScope Powered Fiber Cable, OS2, 2 Fibers, Indoor/Outdoor, 16AWG Conductor	OS2	2
PFC-S04L12	CommScope Powered Fiber Cable, OS2, 4 Fibers, Indoor/Outdoor, 12AWG Conductor	OS2	4
PFC-S04L16	CommScope Powered Fiber Cable, OS2, 4 Fibers, Indoor/Outdoor, 16AWG Conductor	OS2	4
PFC-302L12	CommScope Powered Fiber Cable, OM3, 2 Fibers, Indoor/Outdoor, 12AWG Conductor	OM3	2
PFC-302L16	CommScope Powered Fiber Cable, OM3, 2 Fibers, Indoor/Outdoor, 16AWG Conductor	OM3	2
PFC-304L12	CommScope Powered Fiber Cable, OM3, 4 Fibers, Indoor/Outdoor, 12AWG Conductor	OM3	4
PFC-304L16	CommScope Powered Fiber Cable, OM3, 4 Fibers, Indoor/Outdoor, 16AWG Conductor	OM3	4
PFC-S02L12	CommScope Powered Fiber Cable, OS2, 2 Fibers, Indoor/Outdoor, 12AWG Conductor	OS2	2
PFC-S02L16	CommScope Powered Fiber Cable, OS2, 2 Fibers, Indoor/Outdoor, 16AWG Conductor	OS2	2



# Powered Fiber solutions



## COMMSCOPE PoE EXTENDER

PART NUMBER	DESCRIPTION
PFU-P-C-O-060-02	CommScope PoE Extender, 2 Port Universal Mount, Outdoor, 60 Watt, 2-Port
PFU-P-C-O-060-01	CommScope PoE Extender, 1 Port Universal Mount, Outdoor, 60 Watt, 1-Port
PFU-12-C-O-060-01	CommScope PoE Extender with Fiber passthrough 12VDC
PFU-48-C-O-060-01	CommScope PoE Extender with Fiber passthrough 48VDC

## COMMSCOPE POWER SUPPLIES

PART NUMBER	DESCRIPTION
PFP-PX-S1	CommScope Power Express Class 2 shelf and starter kit, accommodates up to 4 modules of 8 SELV/Class 2 outputs, 1U
PFP-PX-8M	CommScope Power Express module, connects up to 8 Powered Fiber Cables
PFP-PX-SF	CommScope Power Express Slot Filler, used when a module slot is empty
PFP-SPS-S1	CommScope Slimline SPS DC Rectifier Shelf, 120/240VAC to 57VDC, accommodates up to 3 rectifier modules, 1U
PFP-SPS-1600M	CommScope Slimline SPS DC Rectifier Module, 1600 Watt
PFP-SPS-C1	CommScope SPS DC Rectifier controller, factory set to 57VDC
PFP-SPS-SF	CommScope SPS Slot Filler, used when a module slot is empty

# Fiber solutions

## Fiber Optic Cable



### COMMSCOPE INDOOR, RISER DISTRIBUTION CABLE - APAC

FIBER CORE	DESCRIPTION	OM4	OM3	SM
2	CommScope Fiber Optic Cable, Indoor, OFNR, 2 Fibers	8-1859416-5	8-1859416-3	8-1859416-4
4	CommScope Fiber Optic Cable, Indoor, OFNR, 4 Fibers	8-1859417-5	8-1859417-3	8-1859417-4
6	CommScope Fiber Optic Cable, Indoor, OFNR, 6 Fibers	8-1859418-5	8-1859418-3	8-1859418-4
8	CommScope Fiber Optic Cable, Indoor, OFNR 8 Fibers	8-1859419-5	8-1859419-3	8-1859419-4
12	CommScope Fiber Optic Cable, Indoor, OFNR 12 Fibers	8-1859420-5	8-1859420-3	8-1859420-4
24	CommScope Fiber Optic Cable, Indoor, OFNR, 24 Fibers	8-1859421-5	8-1859421-3	8-1859421-4
36	CommScope Fiber Optic Cable, Indoor, OFNR, 36 Fibers	8-1859422-5	8-1859422-3	8-1859422-4
48	CommScope Fiber Optic Cable, Indoor, OFNR, 48 Fibers	8-1859423-5	8-1859423-3	8-1859423-4
72	CommScope Fiber Optic Cable, Indoor, OFNR, 72 Fibers	-	8-1859424-3	8-1859424-4

### COMMSCOPE INDOOR, LOW SMOKE ZERO HALOGEN DISTRIBUTION CABLE - APAC

FIBER CORE	DESCRIPTION	OM4	OM3	SM
2	CommScope Fiber Optic Cable, Indoor, LSZH, 2 Fibers	760249363	760249357	760249369
4	CommScope Fiber Optic Cable, Indoor, LSZH, 4 Fibers	760249364	760249358	760249370
6	CommScope Fiber Optic Cable, Indoor, LSZH, 6 Fibers	760249365	760249359	760249371
8	CommScope Fiber Optic Cable, Indoor, LSZH, 8 Fibers	760249366	760249360	760249372
12	CommScope Fiber Optic Cable, Indoor, LSZH, 12 Fibers	760249367	760249361	760249373
24	CommScope Fiber Optic Cable, Indoor, LSZH, 24 Fibers	760249368	760249362	760249374
48	CommScope Fiber Optic Cable, Indoor, LSZH, 48 Fibers	760250119	760250122	760250125
72	CommScope Fiber Optic Cable, Indoor, LSZH, 72 Fibers	760250121	760250118	760250120
96	CommScope Fiber Optic Cable, Indoor, LSZH, 96 Fibers	760250123	760250124	760250117

# Fiber solutions

## Fiber Optic Cable



### COMMSCOPE INDOOR/OUTDOOR GEL LSZH CENTRAL TUBE CABLE – APAC

FIBER CORE	DESCRIPTION	OM4	OM3	SM
6	CommScope Fiber Optic Cable, Indoor/OutDoor, LSZH, 6 Fibers	760249716	760249713	760249710
12	CommScope Fiber Optic Cable, Indoor/OutDoor, LSZH, 12 Fibers	760249717	760249714	760249711
24	CommScope Fiber Optic Cable, Indoor/OutDoor, LSZH, 24 Fibers	760249718	760249715	760249712

### COMMSCOPE INDOOR/OUTDOOR GEL LSZH STRANDED LOOSE TUBE CABLE – APAC

FIBER CORE	DESCRIPTION	OM4	OM3	SM
48	CommScope Fiber Optic Cable, Indoor/OutDoor, LSZH, 48 Fibers	760249744	760249742	760249740
72	CommScope Fiber Optic Cable, Indoor/OutDoor, LSZH, 72 Fibers	760249745	760249743	760249741

### COMMSCOPE INDOOR/OUTDOOR GEL LSZH CENTRAL LOOSE TUBE CABLE, ARMORED – APAC

FIBER CORE	DESCRIPTION	OM4	OM3	SM
6	CommScope Fiber Optic Cable, Indoor/OutDoor, CST LSZH, 6 Fibers	760249725	760249722	760249719
12	CommScope Fiber Optic Cable, Indoor/OutDoor, CST LSZH, 12 Fibers	760249726	760249723	760249720
24	CommScope Fiber Optic Cable, Indoor/OutDoor, CST LSZH, 24 Fibers	760249727	760249724	760249721

### COMMSCOPE INDOOR/OUTDOOR GEL LSZH STRANDED LOOSE TUBE CABLE, ARMORED – APAC

FIBER CORE	DESCRIPTION	OM4	OM3	SM
48	CommScope Fiber Optic Cable, Indoor/OutDoor, CST LSZH, 48 Fibers	760249750	760249748	760249746
72	CommScope Fiber Optic Cable, Indoor/OutDoor, CST LSZH, 72 Fibers	760249751	760249749	760249747

### COMMSCOPE INDOOR/OUTDOOR LSZH CENTRAL LOOSE TUBE CABLE – ASEAN ONLY

FIBER CORE	DESCRIPTION	OM4	OM3	SM
4	CommScope Fiber Optic Cable, Indoor/OutDoor, LSZH, 4 Fibers	X-1427436-5	X-1427436-3	X-1427436-4
6	CommScope Fiber Optic Cable, Indoor/OutDoor, LSZH, 6 Fibers	X-1427437-5	X-1427437-3	X-1427437-4
8	CommScope Fiber Optic Cable, Indoor/OutDoor, LSZH, 8 Fibers	X-1427438-5	X-1427438-3	X-1427438-4
12	CommScope Fiber Optic Cable, Indoor/OutDoor, LSZH, 12 Fibers	X-1427439-5	X-1427439-3	X-1427439-4
24	CommScope Fiber Optic Cable, Indoor/OutDoor, LSZH, 24 Fibers	X-1427441-5	X-1427441-3	X-1427441-4

### COMMSCOPE INDOOR/OUTDOOR LSZH DISTRIBUTION CABLE – APAC

FIBER CORE	DESCRIPTION	OM4	OM3	SM
4	CommScope Fiber Optic Cable, Indoor/OutDoor, LSZH, 4 Fibers	760238329	760046649	760068718
6	CommScope Fiber Optic Cable, Indoor/OutDoor, LSZH, 6 Fibers	760039974	760039966	760009753
8	CommScope Fiber Optic Cable, Indoor/OutDoor, LSZH, 8 Fibers	760039982	760031674	760073403
12	CommScope Fiber Optic Cable, Indoor/OutDoor, LSZH, 12 Fibers	760006650	700210982	760004184
24	CommScope Fiber Optic Cable, Indoor/OutDoor, LSZH, 24 Fibers	760070300	760070292	760070276

# Fiber solutions

## Fiber Optic Cable



### COMMSCOPE OSP GEL CENTRAL TUBE CABLE - APAC

FIBER CORE	DESCRIPTION	OM4	OM3	SM
6	CommScope Fiber Optic Cable, Outside Plant, 6 Fibers	760249698	760249695	760249692
12	CommScope Fiber Optic Cable, Outside Plant, 12 Fibers	760249699	760249696	760249693
24	CommScope Fiber Optic Cable, Outside Plant, 24 Fibers	760249700	760249697	760249694

### COMMSCOPE OSP GEL LOOSE TUBE CABLE - APAC

FIBER CORE	DESCRIPTION	OM4	OM3	SM
6	CommScope Fiber Optic Cable, Outside Plant, 48 Fibers	760249732	760249730	760249728
12	CommScope Fiber Optic Cable, Outside Plant, 12 Fibers	760249733	760249731	760249729

### COMMSCOPE OSP GEL CENTRAL TUBE CABLE, ARMORED - APAC

FIBER CORE	DESCRIPTION	OM4	OM3	SM
6	CommScope Fiber Optic Cable, Outside Plant, CST, 6 Fibers	760249707	760249704	760249701
12	CommScope Fiber Optic Cable, Outside Plant, CST, 12 Fibers	760249708	760249705	760249702
24	CommScope Fiber Optic Cable, Outside Plant, CST, 24 Fibers	760249709	760249706	760249703

### COMMSCOPE OSP GEL LOOSE TUBE CABLE, ARMORED - APAC

FIBER CORE	DESCRIPTION	OM4	OM3	SM
6	CommScope Fiber Optic Cable, Outside Plant, CST, 48 Fibers	760249738	760249736	760249734
12	CommScope Fiber Optic Cable, Outside Plant, CST, 72 Fibers	760249739	760249737	760249735

### COMMSCOPE OSP CENTRAL TUBE CABLE - ASEAN ONLY

FIBER CORE	DESCRIPTION	OM4	OM3	SM
4	CommScope Fiber Optic Cable, Outside Plant, 4 Fibers	X-1427449-5	X-1427449-3	X-1427449-4
6	CommScope Fiber Optic Cable, Outside Plant, 6 Fibers	X-1427450-5	X-1427450-3	X-1427450-4
8	CommScope Fiber Optic Cable, Outside Plant, 8 Fibers	X-1427451-5	X-1427451-3	X-1427451-4
12	CommScope Fiber Optic Cable, Outside Plant, 12 Fibers	X-1427452-5	X-1427452-3	X-1427452-4
24	CommScope Fiber Optic Cable, Outside Plant, 24 Fibers	X-1427453-5	X-1427453-3	X-1427453-4

### COMMSCOPE OSP CENTRAL TUBE CABLE, ARMORED - ASEAN ONLY

FIBER CORE	DESCRIPTION	OM4	OM3	SM
6	CommScope Fiber Optic Cable, Armored, Outside Plant, 6 Fibers	8-1427432-5	x-1427432-3	8-1427432-4
12	CommScope Fiber Optic Cable, Armored, Outside Plant, 12 Fibers	8-1427434-5	x-1427434-3	8-1427434-4
24	CommScope Fiber Optic Cable, Armored, Outside Plant, 24 Fibers	8-1427435-5	x-1427435-3	8-1427435-4

# Fiber Panel Portfolios

## Panel, Wall Boxes and Accessories



The G2 family of panels and modules is a versatile solution that is available in configurations for any application. No matter what polarity, fiber count or performance needed, the G2 family has a solution.

The AGL panel is a low-cost solution for usable density in a 1U format.

G2 PANELS				
Density	Series	Material ID	Catalog Number	Description
96 LC/RU 32 MPO/RU	AGL - AGILE Simple & Cost Effective	760241517	AGL-1U-FX	Agile Open Rear Fixed, Flat Plate
		760241518	AGL-1U-ANG-FX	Agile Open Rear Fixed, Angled Plate
		760242453	AGL-1U-SL	Agile Open Rear Sliding, Flat Plate
		760242454	AGL-1U-ANG-SL	Agile Open Rear Sliding, Angled Plate
	EPX - Express Compact & Flexible	760251098	EPX-1U-MOD-OPEN-FX	EPX 1U G2 Open Fixed Fiber Panel
		760249998	EPX-1U-MOD-ENC	EPX 1U G2 Enclosed Sliding Fiber Panel
		760251044	EPX-2U-MOD-ENC	EPX 2U G2 Enclosed Sliding Fiber Panel
		760251048	EPX-4U-MOD-ENC	EPX 4U G2 Enclosed Sliding Fiber Panel
		760251042	EPX-1U-MOD-ENC-FX	EPX 1U G2 Enclosed Fixed Fiber Panel
		760251046	EPX-2U-MOD-ENC-FX	EPX 2U G2 Enclosed Fixed Fiber Panel
		760251050	EPX-4U-MOD-ENC-FX	EPX 4U G2 Enclosed Fixed Fiber Panel

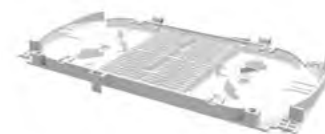
Wall Mount Building Enclosures provide fiber distribution management when space is at a premium. The WBE-MOD's are compatible with all G2 modules and adapter packs.

G2 WALL BOXES			
Density	Material ID	Description	
24 LC	760248900	WB2-EMT-BK-1P-MOD	
48 LC	760248901	WB2-EMT-BK-2P-MOD	
96 LC	760248902	WB2-EMT-BK-4P-MOD	
192 LC	760248903	WB2-EMT-BK-8P-MOD	



WB2-EMT-BK-2P-MOD

G2 ACCESSORIES		
AGILE Panel Accessories		
760241378	AGL-SPLICE-48	AGILE Splice Tray Kit
760193938	AGL-1U-TROUGH	AGILE panel 1U Jumper Management Trough
Miscellaneous		
760209619	CABLE-MOUNT-KIT-12	Cable attachment molding x 12
760058677	RMB-6-1/2	InstaPATCH Plus attachment bracket, rack mounted, six 1/2" fittings
760058685	RMB-6-3/8	InstaPATCH Plus attachment bracket, rack mounted, six 3/8" fittings
760109462	360G2-MOD-BLANK-4PK	Mod Panel Blank Adapter Pack, 4 Panels
760242678	Patch cord fitting kit with 12 cable glands	Gland to fix multiple MPO patchcords on HD/UD/EHD, 12 packs
760242679	Trunk fitting kit with 12 cable glands	Gland to fix multiple MPO 12/24F trunks on HD/UD/EHD, 12 packs



AGL-SPLICE-48



AGL-1U-TROUGH

# Fiber Panel Portfolios

## G2 Modules



G2 MODULES - METHOD A						
	MPO 12 - 12 Fiber		MPO 12 - 24 Fiber		MPO 24 - 24 Fiber	
	Material ID	Description	Material ID	Description	Material ID	Description
LC Multimode (OM3-OM4)	760242493	DM12-12LC-LS-A	760242495	DM12-24LC-LS-A	760242497	DM24-24LC-LS-A
	760242494	DM12-12LC-LS-AF	760242496	DM12-24LC-LS-AF	760242502	DM24-24LC-LS-AF
LC Singlemode UPC	760242498	DM12-12LC-SM-A	760242500	DM12-24LC-SM-A	X	X
	760242499	DM12-12LC-SM-AF	760242501	DM12-24LC-SM-AF	X	X
LC Singlemode APC	760244686	DM12-12LCA-SM-A	760244688	DM12-24LCA-SM-A	X	X
	760244687	DM12-12LCA-SM-AF	760244689	DM12-24LCA-SM-AF	X	X
SC Singlemode APC	760245425	DM12-12SCA-SM-A	X	X	X	X
	760245426	DM12-12SCA-SM-AF	X	X	X	X



G2 CONVERSION MODULES- METHOD A		
	Material ID	Description
MPO12 (2) / MPO8 (3) OM4	760245325	CM12-2X3-LS-A
MPO12 (2) / MPO8 (3) OM4	760245326	CM12-2X3-LS-AF
MPO24 (1) / MPO8 (3) OM4	760245327	CM24-1X3-LS-A
MPO24 (2) / MPO8 (6) OM4	760245328	CM24-2X6-LS-A

# Fiber Panel Portfolios

## G2 Splice Cassettes



### G2 SPLICE CASSETTES WITH PIGTAILS

Multimode		
Material ID	Product Number	Description
760244927	G2-SP-24LCX-PT	Splicing cassette, 24LC, OM4, pigtail
760245398	G2-SP-24LCV-PT	Splicing cassette, 24LC, OM5, pigtail
760245399	G2-SP-12LCX-PT	Splicing cassette, 12LC, OM4, pigtail
760245403	G2-SP-12LCV-PT	Splicing cassette, 12LC, OM5, pigtail
760248831	G2-SP-12SCX-PT	Splicing cassette, 12SC, OM4, pigtail
760244928	G2-SP-24LCX-RPT	Splicing cassette, 24LC, OM4, ribbon pigtail
760245400	G2-SP-12LCX-RPT	Splicing cassette, 12LC, OM4, ribbon pigtail
Singlemode		
760244929	G2-SP-24LCG-PT	Splicing cassette, 24LC, singlemode, pigtail
760245961	G2-SP-24LAG-PT	Splicing cassette, 24LC/APC, singlemode, pigtail
760245401	G2-SP-12LCG-PT	Splicing cassette, 12LC, singlemode, pigtail
760245960	G2-SP-12LAG-PT	Splicing cassette, 12LC/APC, singlemode, pigtail
760245963	G2-SP-12SCG-PT	Splicing cassette, 12SC/UPC, singlemode, pigtail
760245962	G2-SP-12SAG-PT	Splicing cassette, 12SC/APC, singlemode, pigtail
760234930	G2-SP-24LCG-RPT	Splicing cassette, 24LC, singlemode, ribbon pigtail
760245402	G2-SP-12LCG-RPT	Splicing cassette, 12LC, singlemode, ribbon pigtail



### G2 SPLICE CASSETTES WITHOUT PIGTAIL

Material ID	Product Number	Description
760245494	G2-SP-24LC	Splicing cassette, 24LC, no pigtail
760245495	G2-SP-12LC	Splicing cassette, 12LC, no pigtail
760245496	G2-SP-12SC	Splicing cassette, 12SC, no pigtail
760245497	G2-SP-0000	Splicing cassette, no adapter, no pigtail

# Fiber Panel Portfolios

## G2 Adapter Packs



360DPis-24LC-LS

G2 ADAPTER PACKS				
	12 Fiber		24 Fiber	
	Material ID	Description	Material ID	Description
LC Multimode (OM3-OM4)	760230938	360DPis-12LC-LS	760216754	360DPis-24LC-LS
LC Multimode (OM5)	760236043	360DPis-12LC-WB	760236041	360DPis-24LC-WB
LC Singlemode	760230946	360DPis-12LC-SM	760216762	360DPis-24LC-SM
LC Singlemode APC	760230961	360DPis-12LCA-SM	760216770	360DPis-24LCA-SM
SC Multimode (OM3-OM4)	760134551	360DP-12SC-LS	X	X
SC Singlemode	760135087	360DP-12SC-SM	X	X
SC Singlemode APC	760135095	360DP-12SCA-SM	X	X



360DP-2MPO



360DP-4MPO



360DP-6MPO-BK



360DP-8MPO

G2 MPO ADAPTER PACKS - METHOD B		
	Material ID	Description
2 MPO	760107490	360DP-2MPO
4 MPO	760107508	360DP-4MPO
6 MPO	760107516	360DP-6MPO
8 MPO	760107524	360DP-8MPO

G2 MPO ADAPTER PACKS - METHOD A		
	Material ID	Description
2 MPO	760243438	360DP-2MPO-A
4 MPO	760243439	360DP-4MPO-A
6 MPO	760242723	360DP-6MPO-A
8 MPO	760242724	360DP-8MPO-A



# Fiber Panel Portfolios

## Standard Density Fiber Solutions



EPX Standard density fiber optic panels were specifically designed to make your building's infrastructure effective, efficient and easier to manage. This solutions deliver high performance through modular and easy-to use pigtailed splicing cassettes. The LGX/1000 style splice cassettes are designed for individual pigtails, each pre-loaded and pre-routed for quick fusion splicing. These cassettes provide a protective space for fusion splicing, patching and storing your fiber optic cables. By incorporating these advantages into a single cassette, you can be confident that your connections and cabling will be safeguarded from contamination or future damage.

### LGX/1000 STYLE PANELS

Density	Solution	Material ID	Catalog Number	Description
72 LC / RU	EPX - Express Compact & Flexible	760251099	EPX-1U-PNL-OPEN-FX	EPX 1U LGX/1000 STYLE Open Fixed Fiber Panel
		760249997	EPX-1U-PNL-ENC	EPX 1U LGX/1000 STYLE Enclosed Sliding Fiber Panel
		760251045	EPX-2U-PNL-ENC	EPX 2U LGX/1000 STYLE Enclosed Sliding Fiber Panel
		760251049	EPX-4U-PNL-ENC	EPX 4U LGX/1000 STYLE Enclosed Sliding Fiber Panel
		760251043	EPX-1U-PNL-ENC-FX	EPX 1U LGX/1000 STYLE Enclosed Fixed Fiber Panel
		760251047	EPX-2U-PNL-ENC-FX	EPX 2U LGX/1000 STYLE Enclosed Fixed Fiber Panel
		760251051	EPX-4U-PNL-ENC-FX	EPX 4U LGX/1000 STYLE Enclosed Fixed Fiber Panel

### LGX/1000 STYLE WALL BOXES

Material ID	Product Code	Catalog Number
24 LC	760248904	WB2-EMT-BK-1P-PNL
48 LC	760248905	WB2-EMT-BK-2P-PNL
96 LC	760248906	WB2-EMT-BK-4P-PNL
192 LC	760248907	WB2-EMT-BK-8P-PNL

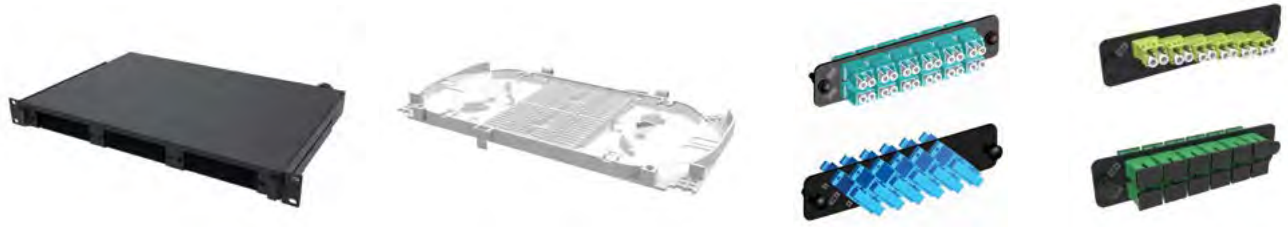


### LGX/1000 STYLE SPLICING CASSETTE

Type	12 LC		24LC		12 SC	
	Material ID	Base Code	Material ID	Base Code	Material ID	Base Code
With Pigtail						
OM4	760221739	PNL-CS-12LCX-PT	760221697	PNL-CS-24LCX-PT	760221770	PNL-CS-12SCX-PT
OM5	760242108	PNL-CS-12LCV-PT	760242109	PNL-CS-24LCV-PT	-	-
SM UPC	760221747	PNL-CS-12LCW-PT	760221705	PNL-CS-24LCW-PT	760221788	PNL-CS-12SCW-PT
SM APC	760222596	PNL-CS-12LAW-PT	760222588	PNL-CS-24LAW-PT	760222604	PNL-CS-12SAW-PT
Without Pigtail						
OM4	760236500	PNL-CS-12LCX	760236503	PNL-CS-24LCX	760236506	PNL-CS-12SCX
OM5	760242110	PNL-CS-12LCV	760242111	PNL-CS-24LCV	-	-
SM UPC	760236501	PNL-CS-12LCW	760236504	PNL-CS-24LCW	760236507	PNL-CS-12SCW
SM APC	760236502	PNL-CS-12LAW	760236505	PNL-CS-24LAW	760236508	PNL-CS-12SAW
Blank Cassette						
Blank	760237458	PNL-CS-00000	SPLICING CASSETTE BLANK			

# Fiber Panel Portfolios

## APAC Local Splicing Solutions



### 1U 36/72F FIBER SPLICING SHELVE (SUPPORT 1000-TYPE ADAPTOR PLATE)

Material ID	Description			
760241725	1U Empty Shelf, support 3 1000-type adaptor plates			
760241378	48F Splice Tray Kit with SMOUV			
760198325	1000 TYPE to G2 type ADPT KIT			
EM2454-001	1000 TYPE ADAPTER PLATE ASSY BLANK			
Adaptor Plate	12 LC Duplex	6 LC Duplex	6 SC Duplex	12 SC Simplex
OM4 (AQUA)	EK5808-001	EK5806-001	760241027	-
OM5 (Lime Green)	760242759	760242760	-	-
SM UPC (Blue)	EK5809-001	EK5807-001	EM1828-001	760242756
SM APC (Green)	760241025	760241026	760241028	760242438
Adaptor Plate	2 ports	6 ports	8 ports	12 ports
MPO Aligned Key	760015412	760034280	760056077	760242757
MPO Key up- Key down	-	-	-	760242758



### 1U 12F/24F/48F/96F FIBER SPLICING SHELVE (INCLUDES ADAPTORS)

Material ID	Description
760245721	1U PANEL 12SC SIMP SM
760245722	1U PANEL 24SC SIMP SM
760249184	1U PANEL 48SC SIMP SM
760249187	1U PANEL 12SC SIMP MM
760249188	1U PANEL 24SC SIMP MM
760249186	1U PANEL 48SC SIMP MM
760241650	1U PANEL 12LC DUPL SM
760241651	1U PANEL 24LC DUPL SM
760249183	1U PANEL 48LC DUPL SM
760241652	1U PANEL 12LC DUPL MM
760241653	1U PANEL 24LC DUPL MM
760249185	1U PANEL 48LC DUPL MM

# Fiber Connectors and Adapters



QWIK II CONNECTORS		
Material ID	Product Code	Description
760117887	MFC-LCF-09-5X	BTW (QWIK-II-LC) Connector, OM4/OM3
760117895	SFC-LCF-09-8X	BTW (QWIK II-LC) Connector, OS2
760184697	SFC-LCF-09-8A-25-PACK	BTW (QWIK II-LC/APC) Connector, OS2, 25 pack
760117945	MFC-SCF-09-5X	BTW (QWIK II-SC) Connector, OM4/OM3
760117952	SFC-SCF-09-8X	BTW (QWIK II-SC) Connector, OS2
760242343	MFC-LCF-UNV-5X	QWIK II Connector, LC, OM3/4/5, Aqua, for 0.25/0.9/2.0/3.0 mm, single pack
760242344	SFC-LCF-UNV-8X	QWIK II Connector, LC, SM-UPC, Blue, for 0.25/0.9/2.0/3.0 mm, single pack
760242345	SFC-LCAF-UNV-8X	QWIK II Connector, LC, SM-APC, Green, for 0.25/0.9/2.0/3.0 mm, single pack
760242346	MFC-SCF-UNV-5X	QWIK II Connector, SC, OM3/4/5, Aqua, for 0.25/0.9/2.0/3.0 mm, single pack
760242347	SFC-SCF-UNV-8X	QWIK II Connector, SC, SM-UPC, Blue, for 0.25/0.9/2.0/3.0 mm, single pack
760242348	SFC-SCAF-UNV-8X	QWIK II Connector, SC, SM-APC, Green, for 0.25/0.9/2.0/3.0 mm, single pack

Material ID	Description
760242377	Basic, Toolkit, Qwik II Connector Termination
760242378	Premium Termination Toolkit for Field Installable Qwik II Connectors
760053207	Cleaning Consumables Kit, Fiber Optic

APAC LOCAL LC/SC ADAPTERS				
PN	Description	Interface	Type	
EH1457-002	LC Duplex Adapter, Flanged, Aqua	LC	MM	
EH1458-002	LC Duplex Adapter, Flangeless, Aqua	LC	MM	
CZ9340-000	LC/UPC Duplex Adapter, Flanged, Blue	LC	SM	
CZ7270-000	LC/UPC Duplex Adapter, Flangeless, Blue	LC	SM	
CZ7271-000	LC/APC Duplex Adapter, Flanged, Green	LC/APC	SM	
CZ9341-000	LC/APC Duplex Adapter, Flangeless, Green	LC/APC	SM	
2-5502776-6	SC/UPC Duplex Adapter, Flanged, Aqua	SC	MM	
CZ9337-000	SC/UPC Duplex Adapter, Flanged, Blue	SC	SM	
CZ7269-000	SC/UPC Duplex Adapter, Flangeless, Blue	SC	SM	
CZ9339-000	SC/APC Duplex Adapter, Flanged, Green	SC/APC	SM	
CZ9338-000	SC/APC Duplex Adapter, Flangeless, Green	SC/APC	SM	
CZ7267-000	SC/UPC Simplex Adapter, Flanged, Blue	SC	SM	
CZ7266-000	SC/UPC Simplex Adapter, Flangeless, Blue	SC	SM	
CZ9336-000	SC/APC Simplex Adapter, Flanged, Green	SC/APC	SM	
CZ7268-000	SC/APC Simplex Adapter, Flangeless, Green	SC/APC	SM	

# Method A MPO Trunk and Patch Cords



## METHOD A MPO-12 TRUNK CABLES

1 A	2 J	3 X	4 5 M X	6 7 M X	8 A	9 10 11 K - M	12 A	13 F	14-16 010	
Construction type A Method A	Family G Trunk, Plenum J Trunk, LSZH/ Riser	Fiber type G Singlemode (A2) X OM4 multimode	Termination end A MP MPO (female) MX MPO (male)	Termination end B MP MPO (female) MX MPO (male)	Construction A 12 Fiber PmP	Fiber count D 12-fiber F 24-fiber H 48-fiber K 72-fiber L 96-fiber M 144-fiber	Color M Aqua J Yellow	Options A No gland B With gland C With pulling eye	Unit of measure F Feet M Meter	Length 010-999 Feet 003-305 Meter
<p>· Male to female will be configured as trunk extensions</p>						<p>· OM4 standard is aqua</p> <p>· Singlemode standard is yellow</p>				

## METHOD A MPO-24 TRUNK CABLES

1 A	2 G	3 V	4 5 2 X	6 7 2 X	8 B	9 10 11 M - M	12 C	13 F	14-16 010	
Construction type A Method A	Family G Trunk, Plenum J Trunk, LSZH/ Riser	Fiber type X OM4 multimode	Termination end A 2P MPO (female) 2X MPO (male)	Termination end B 2P MPO (female) 2X MPO (male)	Construction B 24-fiber PmP	Fiber count F 24-fiber H 48-fiber K 72-fiber L 96-fiber M 144-fiber	Color M Aqua	Options A No gland B With gland C With pulling eye	Unit of measure F Feet M Meter	Length 010-999 Feet 003-305 Meter
<p>· Male to female will be configured as trunk extensions</p>						<p>· OM4 standard is aqua</p>				

## METHOD A MPO-12 PATCH CORDS

1 A	2 Q	3 G	4 5 M X	6 7 M X	8 G	9 10 11 D - J	12 A	13 F	14-16 010	
Construction type A Method A	Cable family Q Plenum array R LSZH array	Fiber type G Singlemode (A2) X OM4 multimode	Connector 1 MP 12f MPO (female) MX 12f MPO (male)	Connector 2 MP 12f MPO (female) MX 12f MPO (male) UC Unconnected	Cordage size G 12-fiber PmP Array Cord	Fiber count D 12-fiber	Color M Aqua J Yellow	Breakout length A No gland	UOM F Feet M Meter	Length 010-999 ft 003-305 m

## METHOD A MPO-24 PATCH CORDS

1 A	2 Q	3 X	4 5 2 X	6 7 2 X	8 H	9 10 11 F - M	12 A	13 F	14-16 010	
Construction type A Method A	Cable family Q Plenum array R LSZH array	Fiber type X OM4 multimode	Connector 1 2P 24f MPO (female) 2X 24f MPO (male)	Connector 2 2P 24f MPO (female) 2X 24f MPO (male) UC Unconnected	Cordage size H 24-fiber PmP Array Cord	Fiber count F 24-fiber	Color M Aqua	Breakout length A No gland	UOM F Feet M Meter	Length 010-999 ft 003-305 m

# Fiber Patch Cords



## LL FIBER OPTIC LC PATCH CORDS

- Duplex zipcord construction provides better mechanical performance with less risk of damage from crimping
- Rugged 1.6 mm cordage for durable and easily handled connections
- Outer jacket colored for easy identification

1 F	2 D	3 X	4 L	5 C	6 L	7 C	8 4	9 2	10 -	11 M	12 X	13 F	14-16 010
<b>Prefix</b> FD Jumper-Plenum FF Jumper-LSZH/ Riser	<b>Fiber Type</b> X OM4 W Single-mode (A1) V OM5	<b>Connector 1</b> LC LC Standard SC SC Standard LA LC Angled SA SC Angled	<b>Connector 2</b> LC LC Standard SC SC Standard LA LC Angled SA SC Angled	<b>Cordage Size</b> 2 1.6mm Simplex 4 1.6mm Zipcord	<b>Fiber Count</b> 1 1 Fiber 2 2 Fiber	<b>Jacket Color</b> M Aqua N Lime Green J Yellow	<b>Breakout Length</b> X No Breakout	<b>UOM</b> F Feet M Meter	<b>Breakout Length</b> 2-200 Feet 1-061 Meters	<b>Length</b> Feet Meters			

- OM4 standard is aqua
- OM5 standard is lime green
- Singlemode standard is yellow



## ULL FIBER OPTIC LC PATCH CORDS

- Duplex zipcord construction provides better mechanical performance with less risk of damage from crimping
- Rugged 1.6 mm cordage for durable and easily handled connections
- Outer jacket colored for easy identification

1 U	2 D	3 X	4 L	5 C	6 L	7 C	8 4	9 2	10 -	11 M	12 X	13 F	14-16 010
<b>Construction type</b> U Ultra-low loss	<b>Cable family</b> D Plenum F LSZH/Riser	<b>Fiber type</b> G Singlemode (A2) X OM4 V OM5	<b>Connector 1</b> LC Standard	<b>Connector 2</b> LC LC Standard UC Unconnectorized	<b>Cordage size</b> 2 1.6mm simplex 4 1.6mm zipcord	<b>Fiber count</b> 1 1-fiber 2 2-fiber	<b>Color</b> M Aqua N Lime green J Yellow	<b>Breakout length</b> X No breakout	<b>UOM</b> F Feet M Meter	<b>Length</b> 2-200 Feet 1-061 Meters			

- OM4 standard is aqua
- OM5 standard is lime green
- Singlemode standard is yellow

• Other lengths available please contact CommScope

# Fiber Pigtails



## 900µm PIGTAIL (SINGLE FIBER)

Fiber	Buffer	Performance	Fiber Count	LC	SC
SM A1 UPC	Tight	LL	1	FAWLCUC01-JXF003	FAWSCUC01-JXF003
SM A1 APC	Tight	LL	1	FAWLAUC01-JXF003	FAWSAUC01-JXF003
OM4	Tight	LL	1	FAXLCUC01-MXF003	FAXSCUC01-MXF003
OM5	Tight	LL	1	FAVLCUC01-NXF003	-
OM4	Tight	ULL	1	UAXLCUC01-MXF003	UAXSCUC01-MXF003
OM5	Tight	ULL	1	UAVLCUC01-NXF003	-
SM A1 UPC	Tight	ULL	1	UAWLCUC01-JXF003	-

## 900µm PIGTAIL KIT (12 COLOR)

Fiber	Buffer	Performance	Fiber Count	LC	SC
SM A1	Tight	LL	12	FAWLCUC0C-XXF003	FAWSCUC0C-XXF003
SM A1/APC	Tight	LL	12	FAWLAUC0C-XXF003	FAWSAUC0C-XXF003
OM4	Tight	LL	12	FAXLCUC0C-XXF003	FAXSCUC0C-XXF003
OM5	Tight	LL	12	FAVLCUC0C-XXF003	-
OM4	Tight	ULL	12	UAXLCUC0C-XXF003	-
OM5	Tight	ULL	12	UAVLCUC0C-XXF003	-
SM A1 UPC	Tight	ULL	12	UAWLCUC0C-XXF003	-

## 900µm PIGTAIL (SINGLE FIBER) WITH KEVLAR

Fiber	Buffer	Performance	Fiber Count	LC	SC
SM A1 UPC	Semi-Tight	LL	1	FBWLCUC11-JXF003	FBWSCUC11-JXF003
SM A1 APC	Semi-Tight	LL	1	FBWLAUC11-JXF003	FBWSAUC11-JXF003
OM4	Semi-Tight	LL	1	FBXLCUC11-MXF003	FBXSCUC11-MXF003
OM5	Semi-Tight	LL	1	FBVLCUC11-NXF003	-
OM4	Semi-Tight	ULL	1	UBXLCUC11-MXF003	UBXSCUC11-MXF003
OM5	Semi-Tight	ULL	1	UBVLCUC11-NXF003	-
SM A1 UPC	Semi-Tight	ULL	1	UBWLCUC11-JXF003	-

# APAC Local Fiber Patch Cords and Pigtails



## PATCH CORDS

Fiber	Jacket	Cable OD	Performance	Fiber Count	LC	SC	LC/SC
OM4	RISER/LSZH	1.8mmx2	LL	2	Y-2105061-X	-	-
OM3	RISER/LSZH	1.8mmx2	LL	2	Y-2105027-X	-	-
SM A2 UPC	RISER/LSZH	1.8mmx2	LL	2	Y-2105028-X	-	-
OM4	RISER/LSZH	1.8mmx2	ULL	2	Y-2160046-X	-	-
OM3	RISER/LSZH	1.8mmx2	ULL	2	Y-1920743-X	Y-2055108-X	Y-2055109-X



## 900µm PIGTAILS

Fiber	Buffer	Performance	Fiber Count	LC	SC
SM G.657A1	Tight	LL	1	2105081-X	2105082-X
OM3	Tight	LL	1	2105083-X	2105085-X
OM4	Tight	LL	1	2105084-X	2105086-X

# Rack and Cabinet

## COMMSCOPE OPEN RACK - ASEAN

PART NUMBER	DESCRIPTION	HEIGHT
760082495	RK6-45A: Equipment Rack, 2-Post, 6 in (152 mm) Channel x 7 ft (2134 mm) H - 19 in (482.6 mm) Alu (45U) 12-24 Tapped Rails, Black	45U



## COMMSCOPE WALL MOUNT RACK

PART NUMBER	DESCRIPTION	HEIGHT	WIDTH X DEPTH	DOOR
1427517-1	CommScope Wall Rack 600X500, 6U, Acrylic Door	6U	600 x 500	Acrylic
1427517-2	CommScope Wall Rack 600X500, 6U, Curve Perforate Door	6U	600 x 500	Curve Perforate
1427520-1	CommScope Wall Rack 600X650, 6U, Acrylic Door	6U	600 x 650	Acrylic
1427520-2	CommScope Wall Rack 600X650, 6U, Curve Perforate Door	6U	600 x 650	Curve Perforate
1427518-1	CommScope Wall Rack 600X500, 9U, Acrylic Door	9U	600 x 500	Acrylic
1427518-2	CommScope Wall Rack 600X500, 9U, Curve Perforate Door	9U	600 x 500	Curve Perforate
1427521-1	CommScope Wall Rack 600X650, 9U, Acrylic Door	9U	600 x 650	Acrylic
1427521-2	CommScope Wall Rack 600X650, 9U, Curve Perforate Door	9U	600 x 650	Curve Perforate
1427519-1	CommScope Wall Rack 600X500, 12U, Acrylic Door	12U	600 x 500	Acrylic
1427519-2	CommScope Wall Rack 600X500, 12U, Curve Perforate Door	12U	600 x 500	Curve Perforate
1427522-1	CommScope Wall Rack 600X650, 12U, Acrylic Door	12U	600 x 650	Acrylic
1427522-2	CommScope Wall Rack 600X650, 12U, Curve Perforate Door	12U	600 x 650	Curve Perforate



# Rack and Cabinet

<b>COMMSCOPE RACK ACCESSORIES - SHELVES</b>		
PART NUMBER	DESCRIPTION	DEPTH
1427509-1	CommScope Vented shelf 400 mm	400
1427510-1	CommScope Fix shelf, for 600 Series, 450 mm	450
1427510-2	CommScope Fix shelf heavy duty, for 600 Series, 450 mm	450
1427510-3	CommScope Fix shelf, for 800 Series, 600 mm	600
1427510-4	CommScope Fix shelf heavy duty, for 800 Series, 600 mm	600
1427510-5	CommScope Fix shelf, for 1100 Series, 800 mm	800
1427510-6	CommScope Fix shelf heavy duty, for 1100 Series, 800 mm	800

<b>COMMSCOPE RACK ACCESSORIES - FANS</b>		
PART NUMBER	DESCRIPTION	SIZE
1427508-1	CommScope Ventilating fan set 2x4"	2x4
1427508-2	CommScope Ventilating fan set 3x4"	3x4

<b>COMMSCOPE RACK ACCESSORIES - AC POWER DISTRIBUTION UNITS</b>		
PART NUMBER	DESCRIPTION	OUTLET
1427507-1	CommScope AC Power Distribution Unit, 6 outlet (Std)	6
1427507-2	CommScope AC Power Distribution Unit, 12 outlet(Std)	12
1-1427507-1	CommScope AC Power Distribution Unit, 6 outlet power plug	6
1-1427507-2	CommScope AC Power Distribution Unit, 12 outlet power plug	12

CommScope pushes the boundaries of communications technology with game-changing ideas and ground-breaking discoveries that spark profound human achievement. We collaborate with our customers and partners to design, create and build the world's most advanced networks. It is our passion and commitment to identify the next opportunity and realize a better tomorrow. Discover more at [commscope.com](https://commscope.com)



---

[commscope.com](https://commscope.com)

Visit our website or contact your local CommScope representative for more information.

© 2021 CommScope, Inc. All rights reserved.

Unless otherwise noted, all trademarks identified by ® or ™ are registered trademarks, respectively, of CommScope, Inc. This document is for planning purposes only and is not intended to modify or supplement any specifications or warranties relating to CommScope products or services. CommScope is committed to the highest standards of business integrity and environmental sustainability with a number of CommScope's facilities across the globe certified in accordance with international standards, including ISO 9001, TL 9000, and ISO 14001. Further information regarding CommScope's commitment can be found at [www.commscope.com/About-Us/Corporate-Responsibility-and-Sustainability](https://www.commscope.com/About-Us/Corporate-Responsibility-and-Sustainability).

CO-112191.8-EN (01/21)