

Branch Cable System (Pre-Fabricated)

Applications

Tunnels & Mining
High-rise Buildings



CAT No. PD22BC02



Quality you can trust

- Pre-terminated in a controlled factory environment
- 100% Pre-tested and guaranteed performance before shipment
- Certified to BS6387 Cat.CWZ
- Can be fitted with IEC60754, 61034 certified parts
- IEC60529 = Waterproof IP68



Advantages of NND Branch Cable Systems

Quality You Can Trust

With the rising cost in construction, increasing building complexity and tighter project deadlines, there is a growing need for a cost-effective, reliable and efficient solution. With our Branch Cable System, we pre-moulded our unique joint with the main and branch cable together in our factory so that it can be installed with ease and convenience at site.

Minimal Installation Time

Our Branch Cable Systems are prefabricated in the factory and arrive ready for installation. Cables may be fixed to walls with cleats or brackets, eliminating the need for trunking processes and greatly reducing installation overall time.

Cost Effective

Our Branch Cable Systems help to fit your special customisation needs and save unnecessary overhead costs. Eliminate the need for expensive labour to install Branch Cable Systems. With an easy installation process requiring less manpower, the ready-to-use Branch Cable Systems effectively reduce labour costs.

Highly Durable & Weather Resistant

Prevent humidity-induced issues during wet weather conditions or humid environments by installing a completely airtight and waterproof Branch Cable System.

Low Labour Cost

Our Branch Cable Systems come certified by a third party, so you can be assured that products are safe and of the highest quality. The certification also eliminates the need to engage other parties to test or check the cables.

Phase identification

Both the main cables and branch cables are colour-coded for easy phase discrimination by request.

International Certifications



- Fully customisable using copper, aluminium, armoured, single core and multicore solutions.
- Can be pre-fitted with fuse-isolated branches to prevent system outages and any risk of fire.
- Compliant with IEC60754, 61034 and can be made fire and water-resistant compliant to BS6387 CWZ and IEC60529 (IP68).
- Can be pre-fitted with BS6387CWZ proprietary fire-resistant plug and play safety connector kits.

Project References

Customers Who Trusted Our Solutions

Land Transport Authority (LTA) Projects



CIRCLE LINE STAGE 2

DOWNTOWN LINE STAGE 1

THOMSON LINE STAGE 1

CIRCLE LINE 6 & NORTH-EAST
LINE EXTENSION

CIRCLE LINE STAGE 3

DOWNTOWN LINE STAGE 2

THOMSON LINE STAGE 2

CIRCLE LINE STAGE 4

DOWNTOWN LINE STAGE 3

THOMSON LINE STAGE 3

CIRCLE LINE STAGE 5

THOMSON LINE STAGE 4

CIRCLE LINE EXTENSION

THOMSON LINE STAGE 5

Singapore Power Grid Projects

EAST-WEST TUNNEL STAGE 1

NORTH-SOUTH TUNNEL STAGE 1

EAST-WEST TUNNEL STAGE 2

NORTH-SOUTH TUNNEL STAGE 2

EAST-WEST TUNNEL STAGE 3

NORTH-SOUTH TUNNEL STAGE 3

Building Projects

DATA CENTRE PROJECTS

MULTI-STOREY WAREHOUSE PROJECTS

CONDOMINIUM PROJECTS

Branch Joint Specifications

Multi-Branch Single Core Cable Systems

NND has developed a comprehensive range of single and multi-branch systems for supplying power to skyscrapers and other high-rise buildings. Each joint can accommodate from 1 to 8 branches from a single main cable. As with other systems, the joints are IP68-rated fully dust and waterproof and can be manufactured to any specification, including British Standard BS6387 CWZ for fire resistance.

Sample Configurations

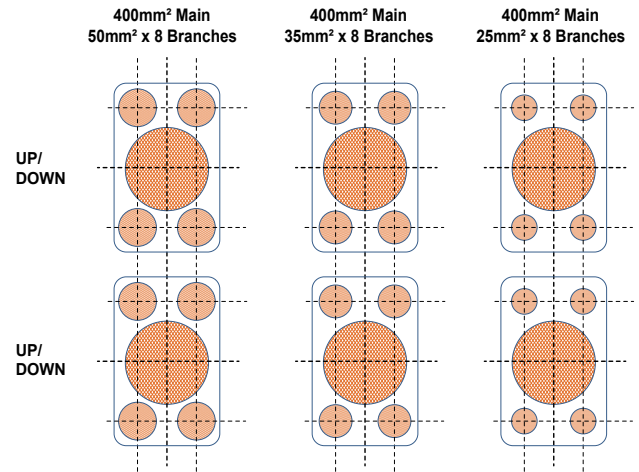


Fig 1

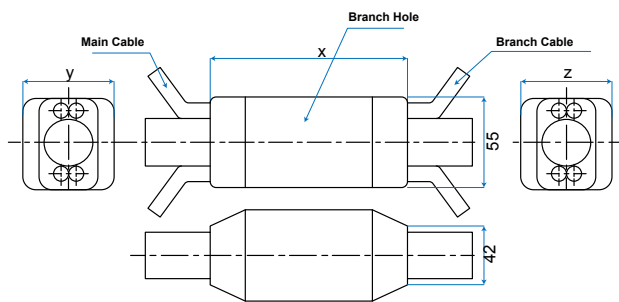
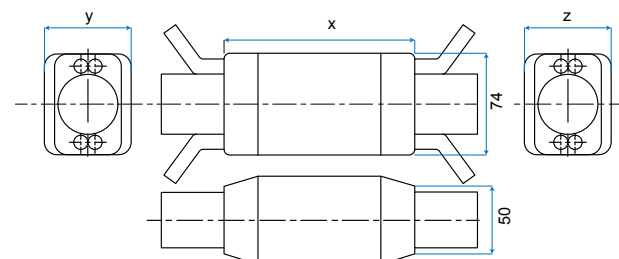


Fig 2

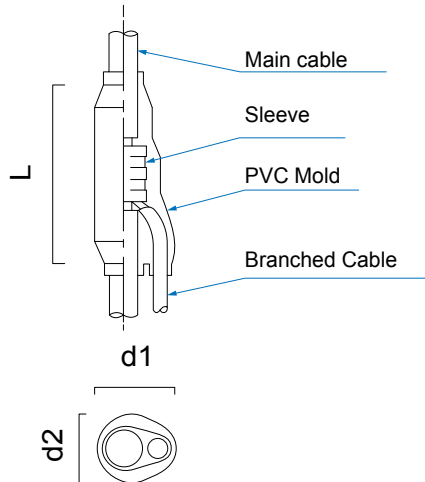


Main Cable	Joint Dimensions			Branch Size	Maximum branches	Fig
Size (mm ²)	x (mm)	y (mm)	z (mm)	mm ²	Branches	
240	140	65	65	16	8	1
				25	8	
				35	8	
				50	8	
300	140	65	65	16	8	
				25	8	
				35	8	
				50	8	
400	140	65	65	16	8	
				25	8	
				35	8	
				50	7	
500	140	65	65	16	8	2
				25	8	
				35	7	
				50	5	
630	140	65	65	16	8	
				25	5	
				35	5	
				50	3	

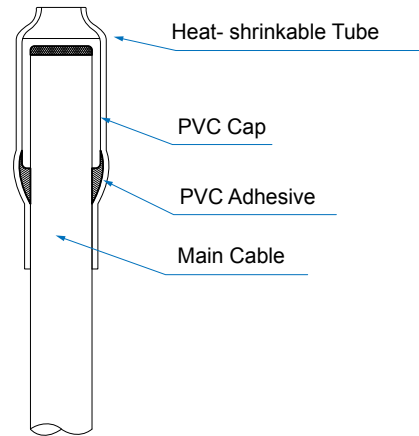
Branch Joint Specifications

Single/ Multi-Core Modular Cable Systems

Branch Mold



Top End



One Branch

Main Cable	Branch Cable	Dimensions (Approx.)			Number of Plate
	Min - Max				
Size (mm ²)	Size (mm ²)	d1 (mm)	d2 (mm)	L (mm)	
10	6 – 10	40	35	100	M-00
16	6 – 16				
25	6 – 25				
35	10 – 25				
50	16 – 25	49	41	110	M-01
70	16 – 35				
95	16 – 50				
120	16 – 95	60	47	130	M-02
150	16 – 95				
185	16 – 95				
240	16 – 120	72	56	136	M-03
300	16 – 120				
400	25 – 120				
500	25 – 240	79	52	140	M-04
630	25 – 240				
800	25 – 240	94	78	155	M-05
1000	25 – 240				

Two Branches

Main Cable	Branch Cable	Dimensions (Approx.)			Number of Plate
	Min - Max				
Size (mm ²)	Size (mm ²)	d1 (mm)	d2 (mm)	L (mm)	
35	10 – 16	60	47	130	M-02
50	10 – 16				
70	10 – 16				
95	10 – 16				
120	10 – 25				

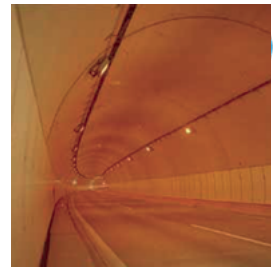
Applications

Tunnels & Mining

TRANSPORTATION TUNNELS

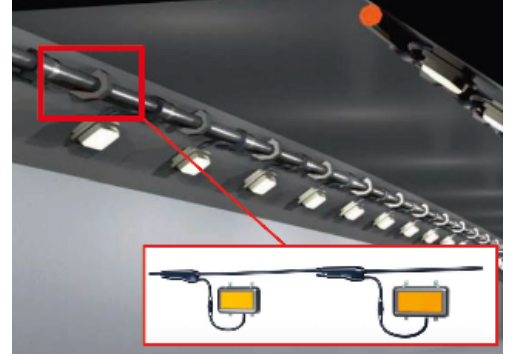
PUBLIC WORK TUNNELS

MINE TUNNELS

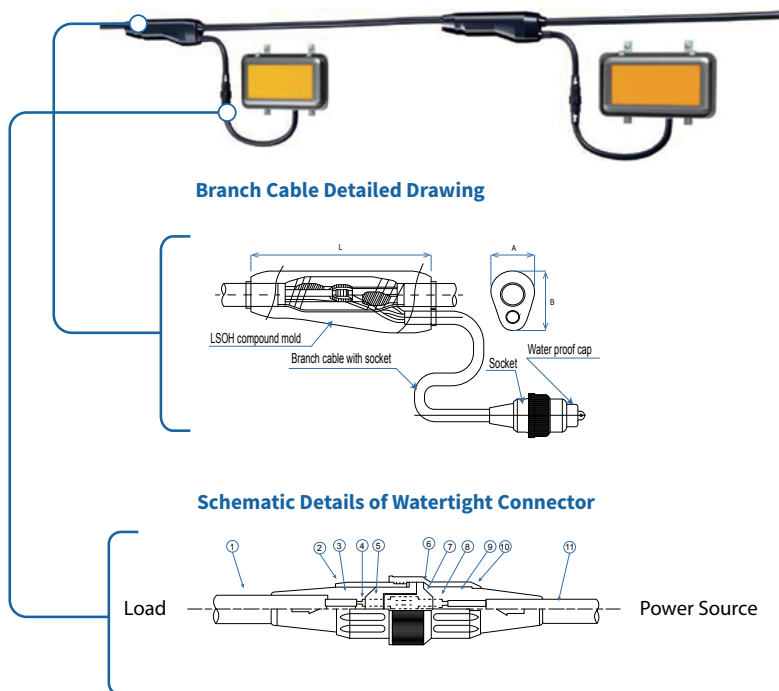


Our IP68-rated, Branch Cable can be used in any kind of tunnel, be it pedestrian, road, high-speed rail or urban/suburban metro. Low-smoke, halogen-free and fire-proof rated to BS6387 CWZ are some of the characteristics of our Branch Cable, making it suitable for emergency lighting runs and any installation environment where safety is of utmost concern, whilst their simplicity can reduce installation times down to 1/5 compared to traditional installation techniques.

We can also supply the systems pre-terminated with fire-proof connectors to ensure the safety and integrity of the entire cable run.



Illumination Cables with Watertight Connectors



- Each luminaire is fuse protected: In case a luminaire is off due to an accident, other luminaires on the same circuit remain on.
- Client/ Contractor is able to find the damaged fitting easily, exchange of a luminaire is easy due to plug & socket type connector.

1	Receptacle-use cable	2PNCT3cx2.0 mm ²
2	Receptacle-use hexagon cap nut	Flame retardant nylon
3	Receptacle-use mold	Chloroprene rubber mold
4	Receptacle pin (male)	BsB
5	Receptacle mold (push)	Chloroprene rubber mold
6	Washer	Flame retardant mold
7	Plug mold (push)	Chloroprene rubber mold
8	Plug pin (female)	BsB
9	Plug mold	Chloroprene rubber mold
10	Plug-use hexagon cap nut	FVCT3cx2.0 mm ²
11	Plug-use cable	Flame retardant cable

Applications

High-Rise Buildings

RESIDENTIAL

HEALTHCARE

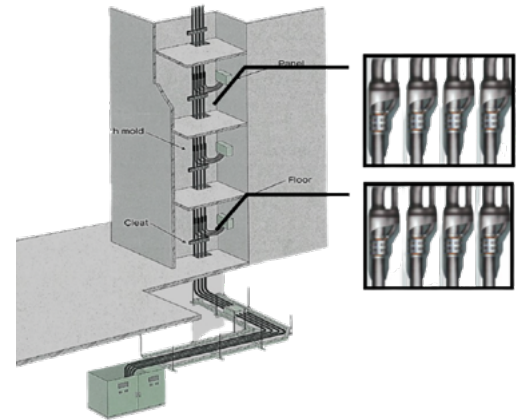
COMMERCIAL

HOSPITALITY

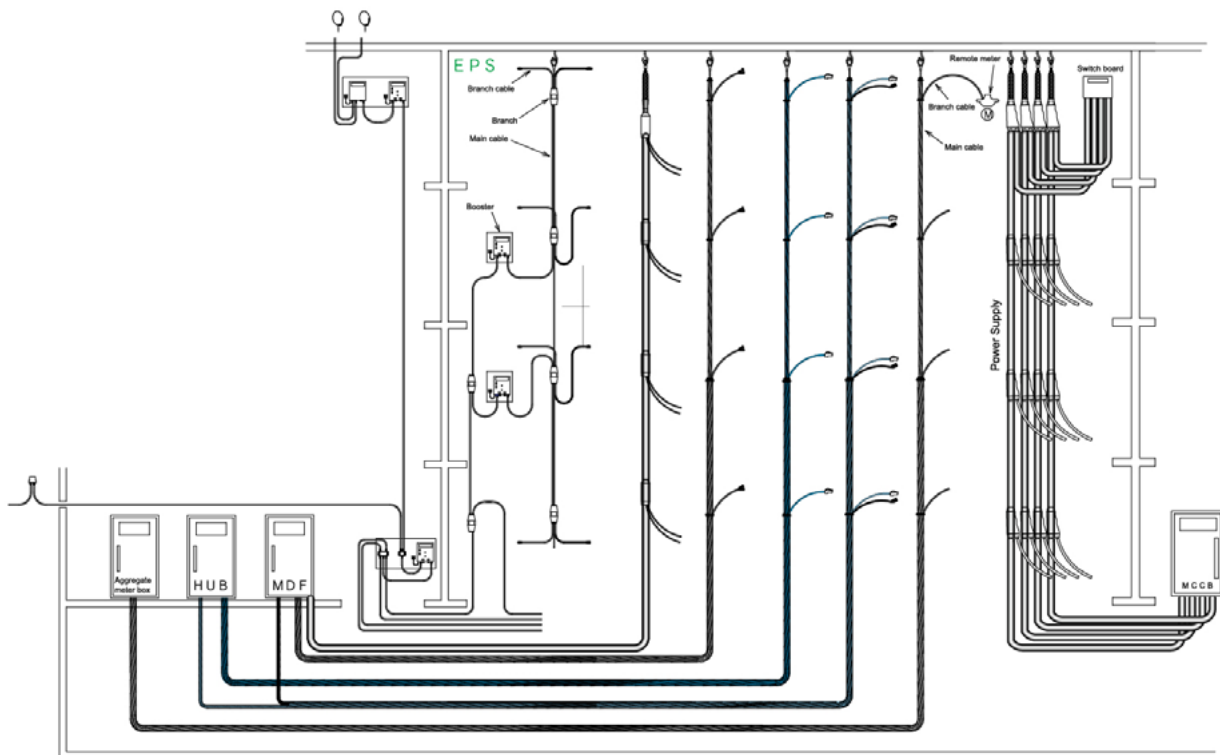
MIXED-USE BUILDINGS



We provides a wide range of cable sizes and types to meet the needs of any electrical installation project, be it high-rise multiple-occupancy residential blocks, hospital, commercial, data centres, hotels or mixed use buildings. Our modular pre-fabricated cable systems are available with a wide range of cables including flame-proof cables, armoured cables, anti-termite/anti-rodent or standard PVC cable.



System Overview



First Stop for Your Projects

About NND

NND assembles their modular cable system in a controlled factory environment, greatly reducing installation time and eliminating the risks associated with terminating cables on site. The modular systems that NND produces here at their dedicated facility are assembled and tested to the highest standards by highly skilled local staff.

Since establishment in 2003, NND is proud to have supplied modular cable systems into hundreds of high rise buildings and tunnel projects across Asia and in the Middle East saving thousands of hours in installation time.

All of NND systems can be adapted to suit your individual requirements, sales and design teams are always on hand to help.



Nishiden (Malaysia) Sdn. Bhd

Established in May, 2003

BS & IEC Certified Manufacturing

Address: 17 jalan paku 16/6. Section 16, 40200 Shah. Alam,
Selangor D.E ,Malaysia



LKH PROJECTS DISTRIBUTION PTE LTD

WEB PRESENCE

www.lkhpd.com.sg

enquiries@lkhpd.com.sg

TELEPHONE

Tel: (65) 6897 7078

Fax: (65) 6897 7079

ADDRESS

53 Kallang Place, Lim Kim Hai Building,
4th Storey, Singapore 339177